

## Product datasheet for **AP22579PU-N**

### Septin 2 (SEPT2) (37-49) Goat Polyclonal Antibody

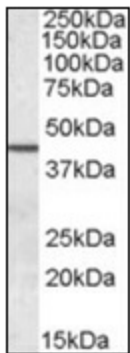
#### Product data:

Product Type:	Primary Antibodies
Applications:	ELISA, IHC, WB
Recommended Dilution:	<b>ELISA:</b> 1/32000, 0.05 - 0.2 µg/ml. <b>Immunohistochemistry on Paraffin Sections:</b> 2.5 µg/ml. <b>Western Blot:</b> 0.05 - 0.2 µg/ml.
Reactivity:	Bovine, Human, Mouse, Rat, Rabbit
Host:	Goat
Clonality:	Polyclonal
Immunogen:	Synthetic peptide from the N-terminus of human SEPT2 / Septin 2 (NP_001008491.1)
Specificity:	This antibody detects Septin-2 (N-term).
Formulation:	Tris saline, pH 7.3 containing 0.02% sodium azide as preservative and 0.5% BSA as stabilizer State: Aff - Purified State: Liquid purified Ig fraction
Concentration:	lot specific
Purification:	Immunoaffinity Chromatography
Conjugation:	Unconjugated
Storage:	Store the antibody undiluted at 2-8°C for one month or (in aliquots) at -20°C for longer. Avoid repeated freezing and thawing.
Stability:	Shelf life: one year from despatch.
Gene Name:	septin 2
Database Link:	<a href="#">Entrez Gene 18000 Mouse</a> <a href="#">Entrez Gene 117515 Rat</a> <a href="#">Entrez Gene 4735 Human Q15019</a>
Background:	Filament-forming cytoskeletal GTPase. Required for normal organization of the actin cytoskeleton. Plays a role in the biogenesis of polarized columnar-shaped epithelium by maintaining polyglutamylated microtubules, thus facilitating efficient vesicle transport, and by impeding MAP4 binding to tubulin. Required for the progression through mitosis.
Synonyms:	SEPT2, DIFF6, KIAA0158, NEDD5, NEDD-5, Septin2, SEPT-2

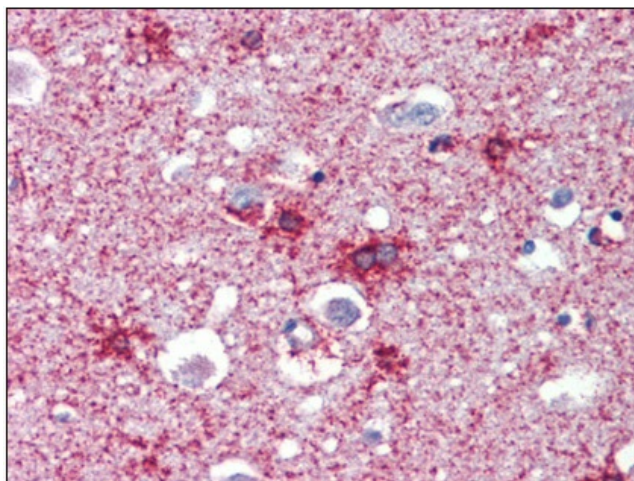


[View online »](#)

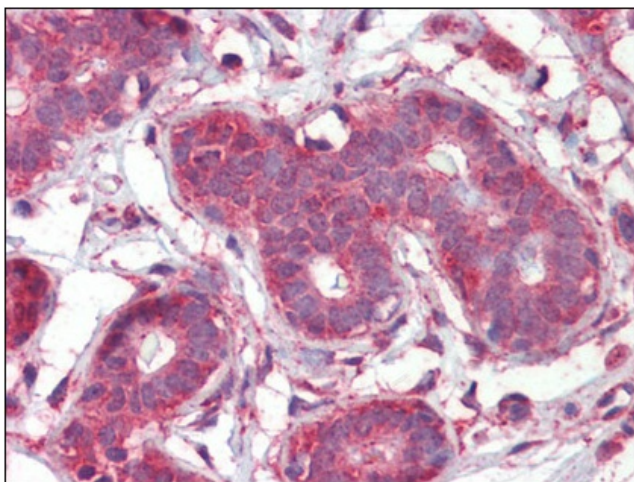
**Product images:**



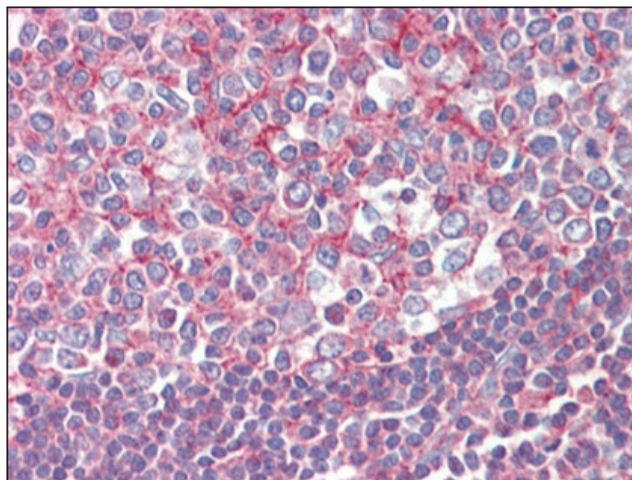
Antibody (0.05 ug/ml) staining of Human Testis lysate (35 ug protein in RIPA buffer). Primary incubation was 1 hour. Detected by chemiluminescence



Human Brain, Cortex (formalin-fixed, paraffin-embedded) stained with SEPT2 antibody followed by biotinylated anti-goat IgG secondary antibody, alkaline phosphatase-streptavidin and chromogen.



Human Breast (formalin-fixed, paraffin-embedded) stained with SEPT2 antibody followed by biotinylated anti-goat IgG secondary antibody, alkaline phosphatase-streptavidin and chromogen.



Human Tonsil (formalin-fixed, paraffin-embedded) stained with SEPT2 antibody followed by biotinylated anti-goat IgG secondary antibody, alkaline phosphatase-streptavidin and chromogen.