

## Product datasheet for **AP22576PU-N**

### **NCF4 (228-238) Goat Polyclonal Antibody**

#### **Product data:**

Product Type:	Primary Antibodies
Applications:	ELISA, IHC, WB
Recommended Dilution:	<b>ELISA:</b> 1/32000. <b>Immunohistochemistry on Paraffin Sections:</b> 2.5 µg/ml. <b>Western Blot:</b> 1/32000, 0.3 - 13 µg/ml.
Reactivity:	Canine, Human, Equine, Monkey
Host:	Goat
Clonality:	Polyclonal
Immunogen:	Synthetic peptide from an internal region of human NCF4
Specificity:	This antibody detects NCF-4 (Internal). It is expected to recognise both reported isoforms (NP_000622.2 and NP_038202.1).
Formulation:	Tris saline buffer, pH 7.3 containing 0.5% BSA as stabilizer and 0.02% sodium azide as preservative State: Aff - Purified State: Liquid purified Ig fraction
Concentration:	lot specific
Purification:	Immunoaffinity chromatography
Conjugation:	Unconjugated
Storage:	Store the antibody undiluted at 2-8°C for one month or (in aliquots) at -20°C for longer. Avoid repeated freezing and thawing.
Stability:	Shelf life: one year from despatch.
Gene Name:	neutrophil cytosolic factor 4
Database Link:	<a href="#">Entrez Gene 4689 Human Q15080</a>



[View online »](#)

**Background:**

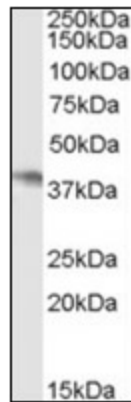
The protein encoded by this gene is a cytosolic element of nicotinamide adenine dinucleotide phosphate-oxidase. Upon neutrophil stimulation, this protein and other cytosolic elements are sent to the cell membrane from the cytosol to form a complex which produces phagocytic oxygen radicals. Two motifs found in this protein, an SH3 domain and a PC motif, are significant to protein-protein interactions. Through interaction with the SH3 domain, this gene is responsible for the downregulation of NADPH-oxidase. Alternative splicing has been observed in this gene; however, the effects they have on gene function is unknown.

**Synonyms:**

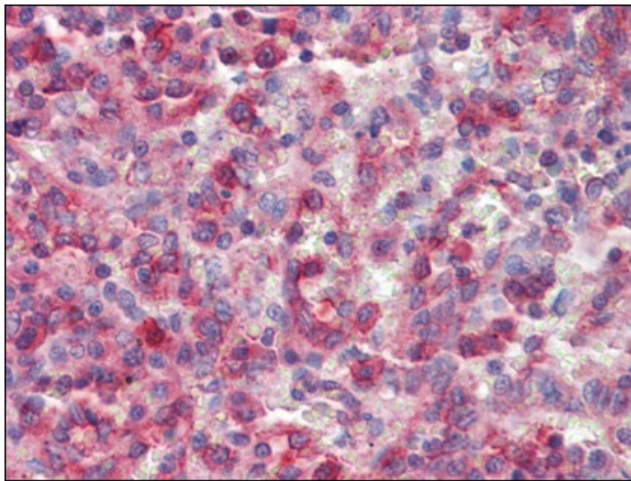
Neutrophil cytosol factor 4, SH3PXD4, p40-phox

**Protein Pathways:**

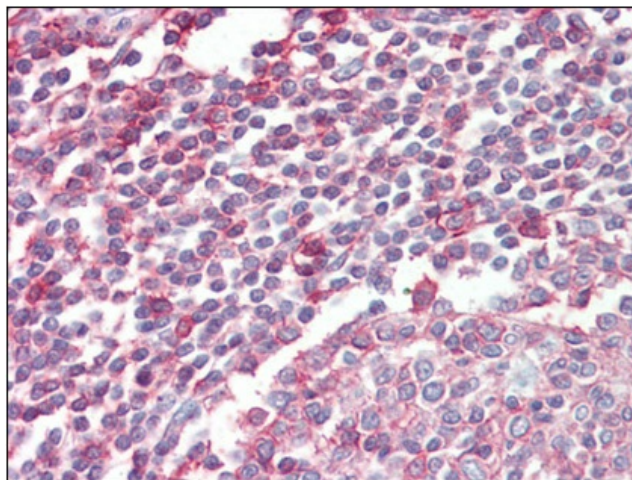
Leukocyte transendothelial migration

**Product images:**

Antibody (0.5 mg/ml) staining of Daudi cell lysate (35 ug protein in RIPA buffer). Primary incubation was 1 hour. Detected by chemiluminescence.



Human Spleen (formalin-fixed, paraffin-embedded) stained with NCF4 antibody followed by biotinylated anti-goat IgG secondary antibody, alkaline phosphatase-streptavidin and chromogen.



Human Tonsil (formalin-fixed, paraffin-embedded) stained with NCF4 antibody followed by biotinylated anti-goat IgG secondary antibody, alkaline phosphatase-streptavidin and chromogen.