

## Product datasheet for **AP22575PU-N**

### **MBD2 (15-29) Goat Polyclonal Antibody**

#### **Product data:**

Product Type:	Primary Antibodies
Applications:	ELISA, IHC, WB
Recommended Dilution:	<b>ELISA:</b> 1/64000. <b>Immunohistochemistry on Paraffin Sections:</b> 2.5 µg/ml. <b>Western Blot.</b>
Reactivity:	Canine, Human, Mouse, Rat, Bovine, Bat, Equine, Hamster, Monkey, Porcine, Rabbit
Host:	Goat
Clonality:	Polyclonal
Immunogen:	Synthetic peptide from an internal region of human MBD2
Specificity:	This antibody detects MBD2 (Internal). It is expected to resognize isoform 1 (NP_003918.1) only.
Formulation:	Tris saline buffer, pH 7.3 containing 0.5% BSA as stabilizer and 0.02% sodium azide as preservative State: Aff - Purified State: Liquid purified Ig fraction
Concentration:	lot specific
Purification:	Immunoaffinity chromatography
Conjugation:	Unconjugated
Storage:	Store the antibody undiluted at 2-8°C for one month or (in aliquots) at -20°C for longer. Avoid repeated freezing and thawing.
Stability:	Shelf life: one year from despatch.
Gene Name:	methyl-CpG binding domain protein 2
Database Link:	<a href="#">Entrez Gene 17191 Mouse</a> <a href="#">Entrez Gene 680172 Rat</a> <a href="#">Entrez Gene 8932 Human</a> <a href="#">Q9UBB5</a>



[View online »](#)

**Background:**

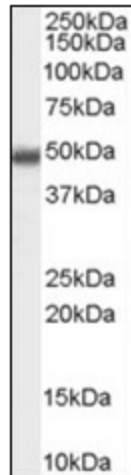
DNA methylation is the major modification of eukaryotic genomes and plays an essential role in mammalian development. Human proteins MECP2, MBD1, MBD2, MBD3, and MBD4 comprise a family of nuclear proteins related by the presence in each of a methyl-CpG binding domain (MBD). Each of these proteins, with the exception of MBD3, is capable of binding specifically to methylated DNA. MECP2, MBD1 and MBD2 can also repress transcription from methylated gene promoters.

**Synonyms:**

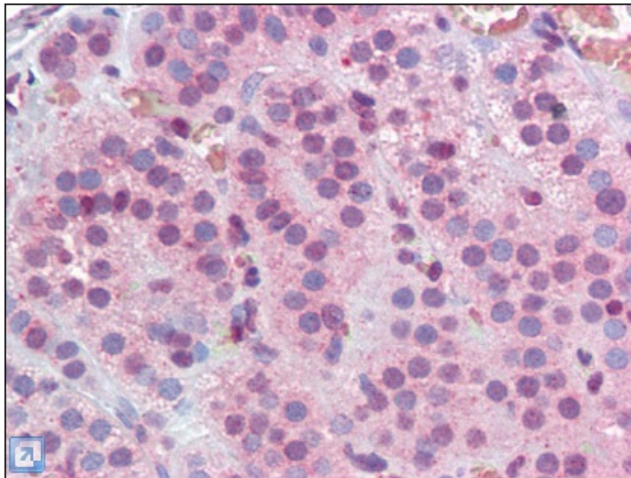
Methyl-CpG-binding domain protein 2, Demethylase, DMTase

**Protein Families:**

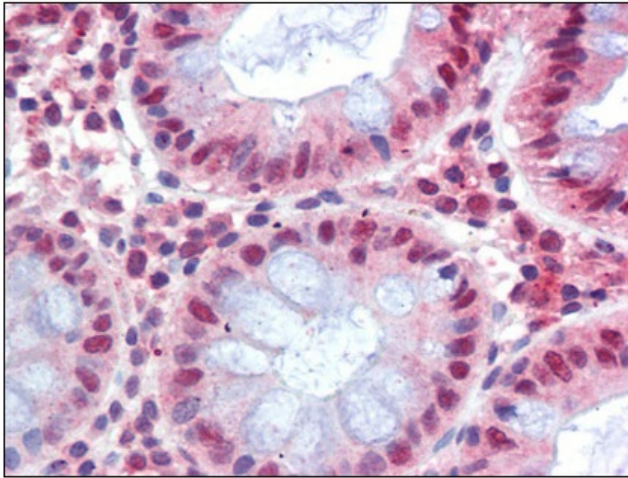
Druggable Genome, Stem cell - Pluripotency, Transcription Factors

**Product images:**

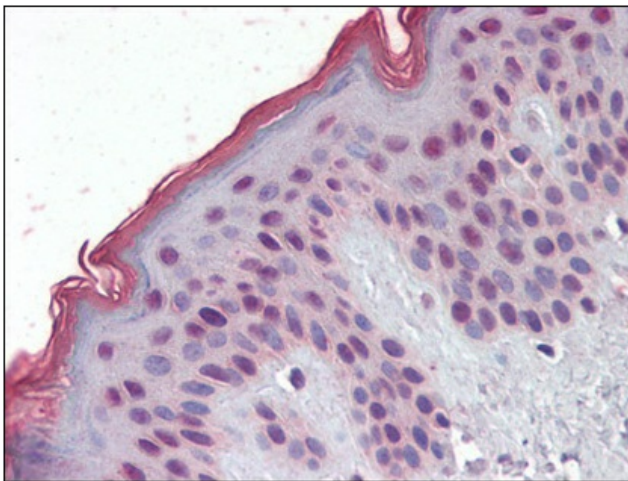
Antibody (0.3 ug/ml) staining of Jurkat cell lysate (35 ug protein in RIPA buffer). Primary incubation was 1 hour. Detected by chemiluminescence.



Human Adrenal (formalin-fixed, paraffin-embedded) stained with MBD2 antibody followed by biotinylated anti-goat IgG secondary antibody, alkaline phosphatase-streptavidin and chromogen.



Human Colon (formalin-fixed, paraffin-embedded) stained with MBD2 antibody followed by biotinylated anti-goat IgG secondary antibody, alkaline phosphatase-streptavidin and chromogen.



Human Skin (formalin-fixed, paraffin-embedded) stained with MBD2 antibody followed by biotinylated anti-goat IgG secondary antibody, alkaline phosphatase-streptavidin and chromogen.