

Product datasheet for **AP22572PU-N**

RBP1 (122-135) Goat Polyclonal Antibody

Product data:

Product Type:	Primary Antibodies
Applications:	ELISA, IHC, WB
Recommended Dilution:	ELISA: 1/16000. Immunohistochemistry on Paraffin Sections: 5 µg/ml. Western Blot: 0.1 - 0.3 µg/ml.
Reactivity:	Human, Mouse, Monkey
Host:	Goat
Clonality:	Polyclonal
Immunogen:	Synthetic Peptide from the C Terminus of Human RBP1 (NP_002890.1)
Specificity:	This antibody recognizes Retinol-binding protein 1 (RBP1) at aa 122-135.
Formulation:	Tris saline, pH~7.3 containing 0.02% Sodium Azide as preservative and 0.5% BSA as stabilizer State: Aff - Purified State: Liquid purified Ig fraction
Concentration:	lot specific
Purification:	Immunoaffinity Chromatography
Conjugation:	Unconjugated
Storage:	Store the antibody undiluted at 2-8°C for one month or (in aliquots) at -20°C for longer. Avoid repeated freezing and thawing.
Stability:	Shelf life: one year from despatch.
Gene Name:	retinol binding protein 1
Database Link:	Entrez Gene 5947 Human P09455



[View online »](#)

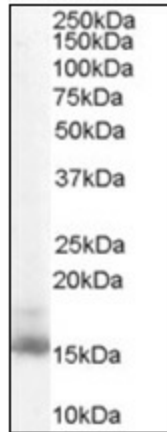
Background:

RBP1 is a carrier protein involved in the transport of retinol (vitamin A alcohol) from the liver storage site to peripheral tissue. Vitamin A is a fat-soluble vitamin necessary for growth, reproduction, differentiation of epithelial tissues, and vision. In plasma, the RBP-retinol complex interacts with transthyretin, this prevents its loss by filtration through the kidney glomeruli.

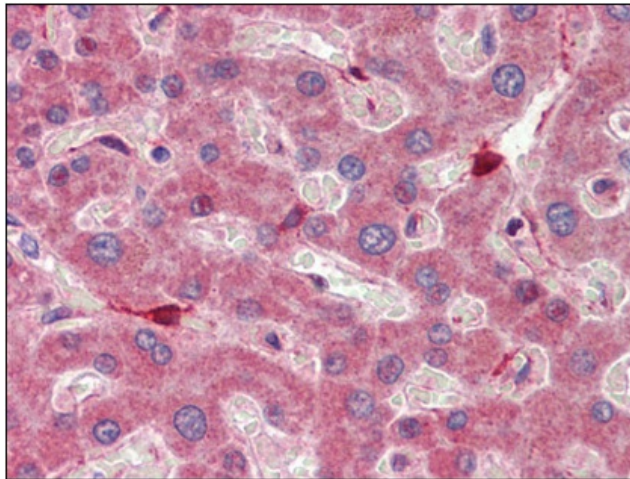
Detected in nearly all the tissues with higher expression in adult ovary, pancreas, pituitary gland and adrenal gland, and fetal liver.

Synonyms:

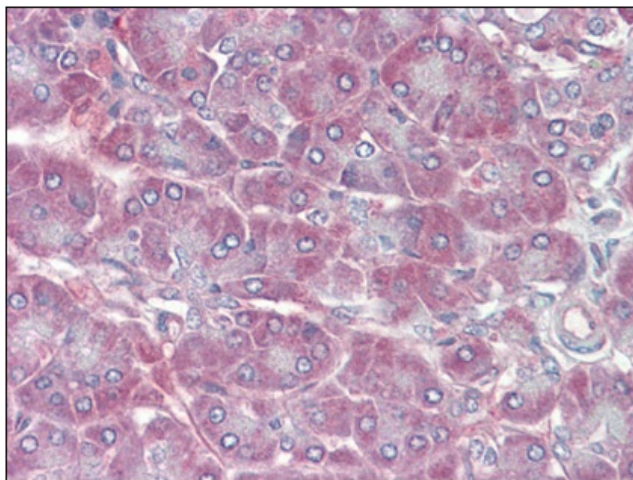
RBP1, CRBP1, CRBP-I

Product images:

(0.1 ug/ml) Staining of NIH 3T3 lysate (35 ug protein in RIPA buffer). Primary incubation was 1 hour. Detected by chemiluminescence.



Human Liver (formalin-fixed, paraffin-embedded) stained with RBP1 antibody followed by biotinylated anti-goat IgG secondary antibody, alkaline phosphatase-streptavidin and chromogen.



Human Pancreas (formalin-fixed, paraffin-embedded) stained with RBP1 antibody followed by biotinylated anti-goat IgG secondary antibody, alkaline phosphatase-streptavidin and chromogen.