

Product datasheet for **AP22567PU-N**

KMT2B (2703-2715) Goat Polyclonal Antibody

Product data:

Product Type:	Primary Antibodies
Applications:	ELISA, IHC
Recommended Dilution:	ELISA: 1/128000. Immunohistochemistry on Paraffin Sections: 5 µg/ml.
Reactivity:	Human, Mouse, Rat, Bovine, Monkey, Porcine, Zebrafish
Host:	Goat
Clonality:	Polyclonal
Immunogen:	Synthetic peptide from C-term of human MLL4
Specificity:	This antibody detects MLL4 (C-term).
Formulation:	Tris saline buffer, pH 7.3 containing 0.5% BSA as stabilizer and 0.02% sodium azide as preservative State: Aff - Purified State: Liquid purified Ig fraction
Concentration:	lot specific
Purification:	Immunoaffinity chromatography
Conjugation:	Unconjugated
Storage:	Store the antibody undiluted at 2-8°C for one month or (in aliquots) at -20°C for longer. Avoid repeated freezing and thawing.
Stability:	Shelf life: one year from despatch.
Gene Name:	lysine methyltransferase 2B
Database Link:	Entrez Gene 75410 Mouse Entrez Gene 102550344 Rat Entrez Gene 9757 Human Q9UMN6



[View online »](#)

Background:

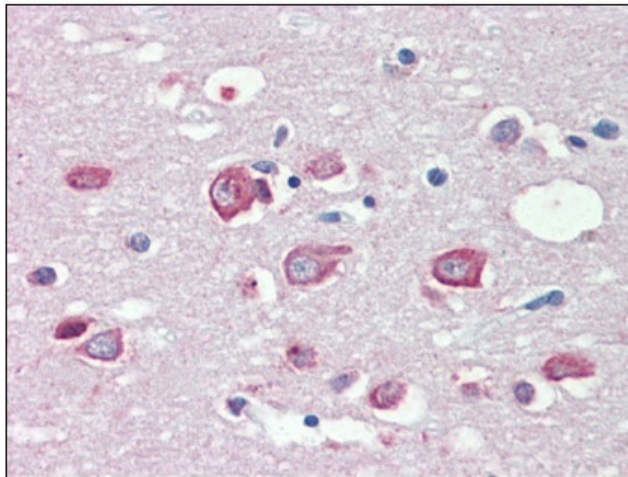
This gene encodes a protein which contains multiple domains including a CXXC zinc finger, three PHD zinc fingers, two FY-rich domains, and a SET (suppressor of variegation, enhancer of zeste, and trithorax) domain. The SET domain is a conserved C-terminal domain that characterizes proteins of the MLL (mixed-lineage leukemia) family. This gene is ubiquitously expressed in adult tissues. It is also amplified in solid tumor cell lines, and may be involved in human cancer. Two alternatively spliced transcript variants encoding distinct isoforms have been reported for this gene, however, the full length nature of the shorter transcript is not known.

Synonyms:

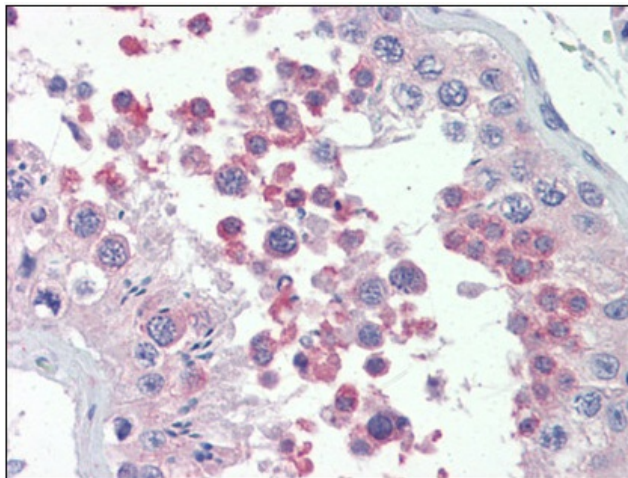
WBP7, HRX2, KIAA0304, KMT2D, MLL2, TRX2

Protein Families:

Druggable Genome

Product images:

Human Brain, Cortex (formalin-fixed, paraffin-embedded) stained with MLL4 antibody followed by biotinylated anti-goat IgG secondary antibody, alkaline phosphatase-streptavidin and chromogen.



Human Testis (formalin-fixed, paraffin-embedded) stained with MLL4 antibody followed by biotinylated anti-goat IgG secondary antibody, alkaline phosphatase-streptavidin and chromogen.