

Product datasheet for **AP22559PU-N**

P4HA1 (431-443) Goat Polyclonal Antibody

Product data:

Product Type:	Primary Antibodies
Applications:	ELISA, IHC, WB
Recommended Dilution:	ELISA: 1/32000. Immunohistochemistry on Paraffin Sections: 5 µg/ml. Western Blot: 1/32000, 0.1 µg/ml.
Reactivity:	Canine, Human, Mouse, Rat, Bovine, Bat, Chicken, Equine, Monkey, Porcine, Rabbit
Host:	Goat
Clonality:	Polyclonal
Immunogen:	Synthetic peptide from an internal region of human P4HA1
Specificity:	This antibody detects P4HA1 (Internal).
Formulation:	Tris saline buffer, pH 7.3, 0.5% BSA, 0.02% sodium azide State: Aff - Purified State: Liquid Ig fraction
Concentration:	lot specific
Purification:	Immunoaffinity chromatography
Conjugation:	Unconjugated
Storage:	Store at 2 - 8 °C for up to three months or (in aliquots) at -20 °C for longer. Avoid repeated freezing and thawing.
Stability:	Shelf life: one year from despatch.
Gene Name:	prolyl 4-hydroxylase subunit alpha 1
Database Link:	Entrez Gene 18451 Mouse Entrez Gene 64475 Rat Entrez Gene 5033 Human P13674
Background:	P4HA1 is a component of prolyl 4-hydroxylase, a key enzyme in collagen synthesis composed of two identical alpha subunits and two beta subunits. The encoded protein is one of several different types of alpha subunits and provides the major part of the catalytic site of the active enzyme. In collagen and related proteins, prolyl 4-hydroxylase catalyzes the formation of 4-hydroxyproline that is essential to the proper three-dimensional folding of newly synthesized procollagen chains.



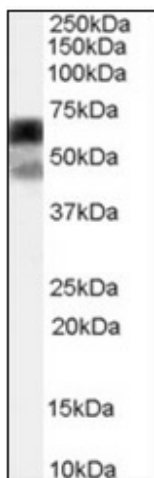
[View online »](#)

Synonyms: P4HA, Prolyl 4-hydroxylase subunit alpha-1, EC=1.14.11.2, 4-PH alpha-1

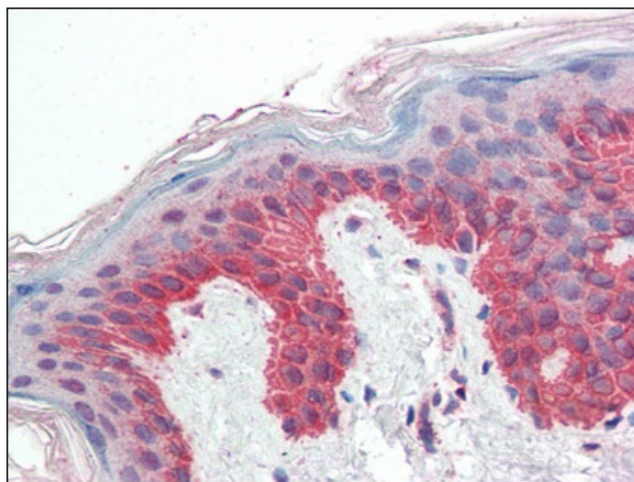
Protein Families: Druggable Genome, P450

Protein Pathways: Arginine and proline metabolism, Metabolic pathways

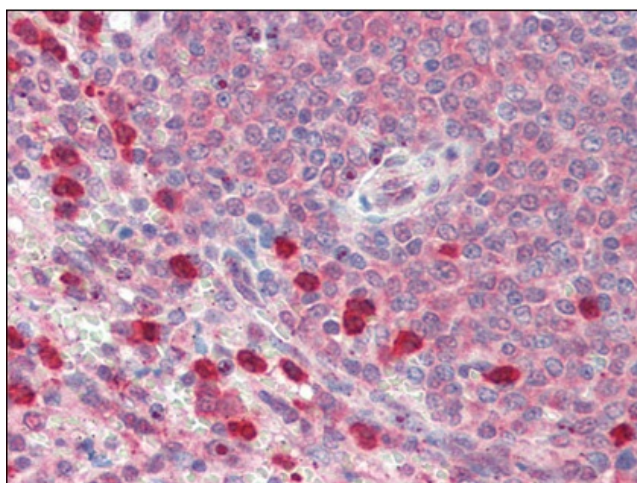
Product images:



Antibody (0.2 ug/ml) staining of HEK293 cell lysate (35 ug protein in RIPA buffer). Primary incubation was 1 hour. Detected by chemiluminescence.



Human Skin (formalin-fixed, paraffin-embedded) stained with P4HA1 antibody at 5 ug/ml followed by biotinylated anti-goat IgG secondary antibody, alkaline phosphatase-streptavidin and chromogen.



Human Spleen (formalin-fixed, paraffin-embedded) stained with P4HA1 antibody at 5 ug/ml followed by biotinylated anti-goat IgG secondary antibody, alkaline phosphatase-streptavidin and chromogen.