

## Product datasheet for **AP22556PU-N**

### SIL1 (448-461) Goat Polyclonal Antibody

#### Product data:

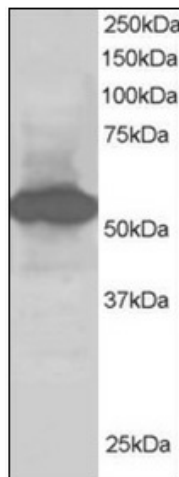
Product Type:	Primary Antibodies
Applications:	ELISA, IHC, WB
Recommended Dilution:	<b>ELISA:</b> 1/8000. <b>Immunohistochemistry on Paraffin Sections:</b> 5 µg/ml. <b>Western Blot:</b> 1 - 2 µg/ml.
Reactivity:	Human
Host:	Goat
Clonality:	Polyclonal
Immunogen:	Synthetic peptide from C-term of human SIL1
Specificity:	This antibody detects SIL1 / BAP (C-term).
Formulation:	Tris saline buffer, pH 7.3, 0.5% BSA, 0.02% sodium azide State: Aff - Purified State: Liquid Ig fraction
Concentration:	lot specific
Purification:	Immunoaffinity chromatography
Conjugation:	Unconjugated
Storage:	Store at 2 - 8 °C for up to three months or (in aliquots) at -20 °C for longer. Avoid repeated freezing and thawing.
Stability:	Shelf life: one year from despatch.
Gene Name:	SIL1 nucleotide exchange factor
Database Link:	<a href="#">Entrez Gene 64374 Human Q9H173</a>
Background:	BAP / SIL1 is a resident endoplasmic reticulum (ER), N-linked glycoprotein with an N-terminal ER targeting sequence, 2 putative N-glycosylation sites, and a C-terminal ER retention signal. This protein functions as a nucleotide exchange factor for another unfolded protein response protein. Mutations in this gene have been associated with Marinesco-Sjogren syndrome. Alternate transcriptional splice variants have been characterized.
Synonyms:	BiP-associated protein



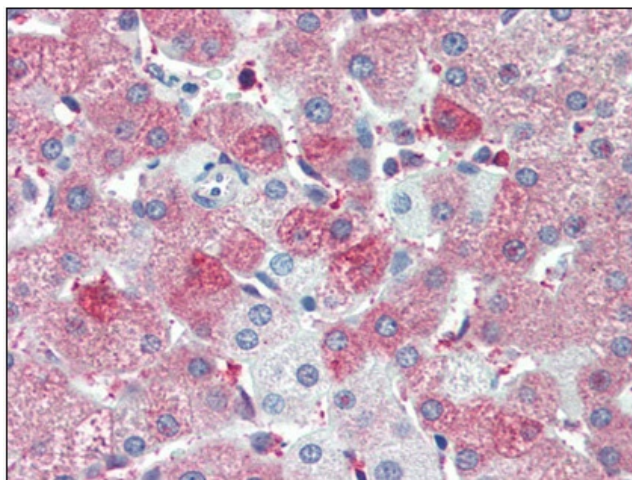
[View online »](#)

Protein Families: Protease, Secreted Protein, Transmembrane

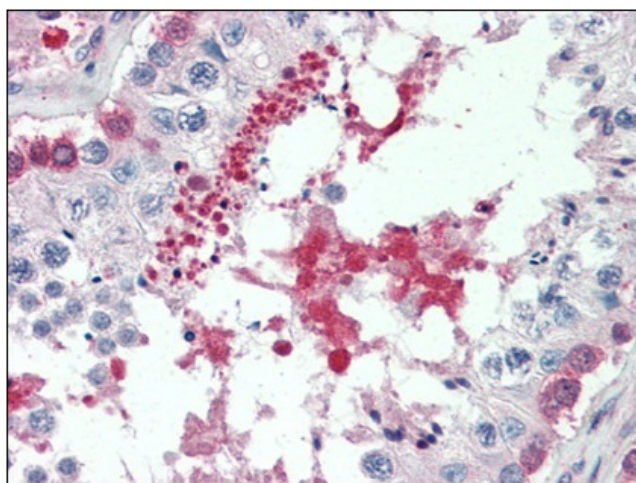
### Product images:



Antibody staining (1 ug/ml) of Human Kidney lysate (RIPA buffer, 30 ug total protein per lane). Primary incubated for 1 hour. Detected by western blot using chemiluminescence.



Human Liver (formalin-fixed, paraffin-embedded) stained with SIL1 antibody AP22556PU-N at 5 ug/ml followed by biotinylated anti-goat IgG secondary antibody, alkaline phosphatase-streptavidin and chromogen.



Human Testis (formalin-fixed, paraffin-embedded) stained with SIL1 antibody AP22556PU-N at 5 ug/ml followed by biotinylated anti-goat IgG secondary antibody, alkaline phosphatase-streptavidin and chromogen.