

Product datasheet for **AP22543PU-N**

TCF3 / E2A (TCF3) (522-535) Goat Polyclonal Antibody

Product data:

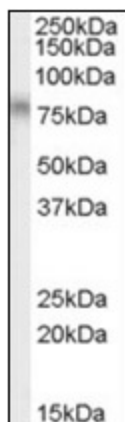
Product Type:	Primary Antibodies
Applications:	ELISA, IHC, WB
Recommended Dilution:	ELISA: 1/128000. Immunohistochemistry on Paraffin Sections: 3.75 µg/ml. Western Blot: 1/128000, 0.01 - 0.03 µg/ml.
Reactivity:	Human
Host:	Goat
Clonality:	Polyclonal
Immunogen:	Synthetic peptide from an internal region of human TCF3
Specificity:	This antibody detects TCF3 / E2A (Internal).
Formulation:	Tris saline buffer, pH 7.3, 0.5% BSA, 0.02% sodium azide State: Aff - Purified State: Liquid Ig fraction
Concentration:	lot specific
Purification:	Immunoaffinity Chromatography
Conjugation:	Unconjugated
Storage:	Store at 2 - 8 °C for up to three months or (in aliquots) at -20 °C for longer. Avoid repeated freezing and thawing.
Stability:	Shelf life: one year from despatch.
Gene Name:	transcription factor 3
Database Link:	Entrez Gene 6929 Human P15923
Background:	TCF3 / E2A is a member of the E protein (class I) family of helix-loop-helix transcription factors. E proteins activate transcription by binding to regulatory E-box sequences on target genes as heterodimers or homodimers, and are inhibited by heterodimerization with inhibitor of DNA-binding (class IV) helix-loop-helix proteins. E proteins play a critical role in lymphopoiesis, and the encoded protein is required for B and T lymphocyte development.
Synonyms:	Transcription factor 3, TCF-3, Transcription factor E2-alpha, ITF1, ITF-1



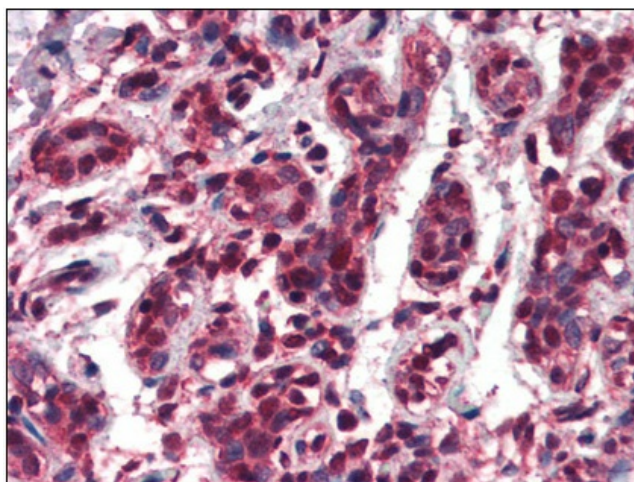
[View online »](#)

Protein Families: Druggable Genome, ES Cell Differentiation/IPS, Induced pluripotent stem cells, Transcription Factors

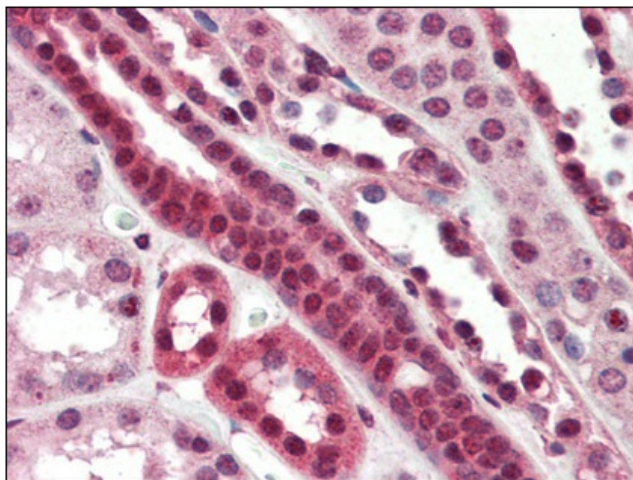
Product images:



Antibody (0.01 ug/ml) staining of Daudi cell lysate (35 ug protein in RIPA buffer). Primary incubation was 1 hour. Detected by chemiluminescence.



Human Breast (formalin-fixed, paraffin-embedded) stained with TCF3 antibody at 3.75 ug/ml followed by biotinylated anti-goat IgG secondary antibody, alkaline phosphatase-streptavidin and chromogen.



Human Kidney (formalin-fixed, paraffin-embedded) stained with TCF3 antibody at 3.75 ug/ml followed by biotinylated anti-goat IgG secondary antibody, alkaline phosphatase-streptavidin and chromogen.