

## Product datasheet for **AP22539PU-N**

### WNT3 (315-329) Goat Polyclonal Antibody

#### Product data:

Product Type:	Primary Antibodies
Applications:	ELISA, IHC, WB
Recommended Dilution:	<b>ELISA:</b> 1/2000. <b>Immunohistochemistry on Paraffin Sections:</b> 3.75 µg/ml. <b>Western Blot:</b> 1/2000, 1 - 3 µg/ml.
Reactivity:	Canine, Human, Mouse, Rat, Bovine, Bat, Chicken, Equine, Monkey, Porcine, Xenopus, Zebrafish
Host:	Goat
Clonality:	Polyclonal
Immunogen:	Synthetic peptide from an internal region of human WNT3
Specificity:	This antibody detects WNT3 (Internal).
Formulation:	Tris saline buffer, pH 7.3, 0.5% BSA, 0.02% sodium azide State: Aff - Purified State: Liquid Ig fraction
Concentration:	lot specific
Purification:	Immunoaffinity chromatography
Conjugation:	Unconjugated
Storage:	Store at 2 - 8 °C for up to three months or (in aliquots) at -20 °C for longer. Avoid repeated freezing and thawing.
Stability:	Shelf life: one year from despatch.
Gene Name:	Wnt family member 3
Database Link:	<a href="#">Entrez Gene 22415 Mouse</a> <a href="#">Entrez Gene 24882 Rat</a> <a href="#">Entrez Gene 7473 Human P56703</a>
Background:	The WNT gene family consists of structurally related genes which encode secreted signaling proteins. These proteins have been implicated in oncogenesis and in several developmental processes, including regulation of cell fate and patterning during embryogenesis. This gene is a member of the WNT gene family. It encodes a protein which shows 98% amino acid identity to mouse Wnt3 protein, and 84% to human WNT3A protein, another WNT gene product.



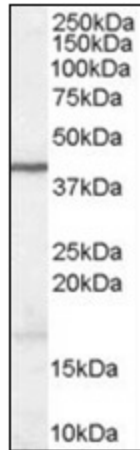
[View online »](#)

**Synonyms:** Proto-oncogene protein Wnt-3, INT4, INT-4

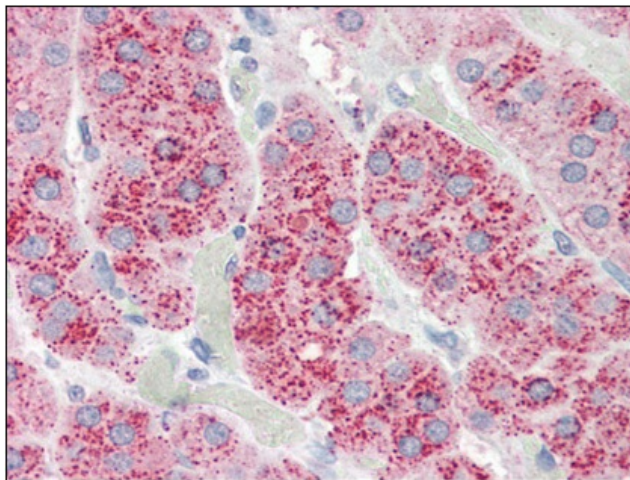
**Protein Families:** Druggable Genome, Secreted Protein, Transmembrane

**Protein Pathways:** Basal cell carcinoma, Hedgehog signaling pathway, Melanogenesis, Pathways in cancer, Wnt signaling pathway

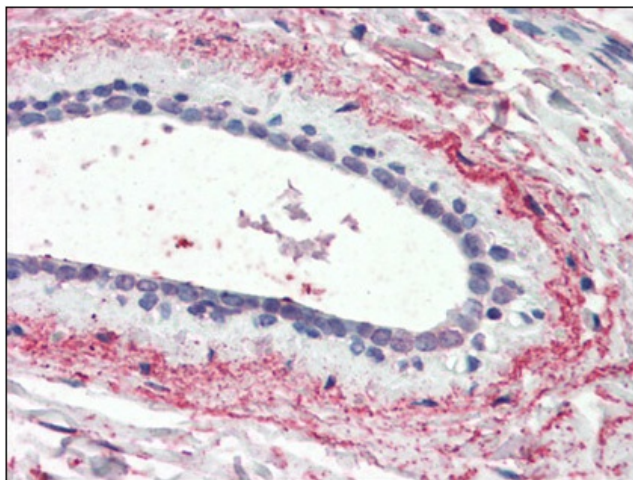
**Product images:**



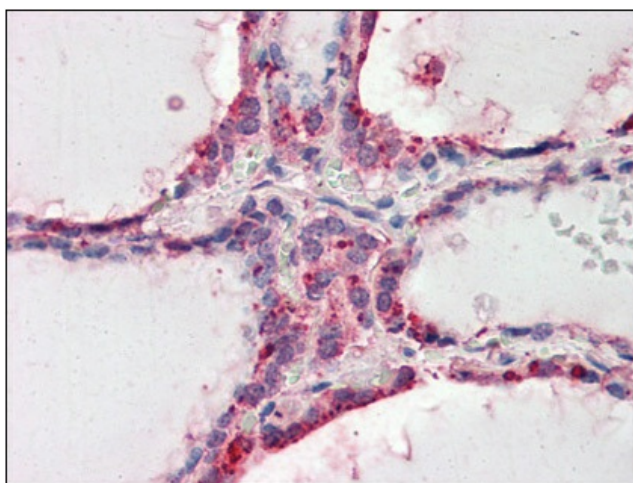
Antibody (1 ug/ml) staining of Human Brain lysate (35 ug protein in RIPA buffer). Primary incubation was 1 hour. Detected by chemiluminescence.



Human Adrenal (formalin-fixed, paraffin-embedded) stained with WNT3 antibody at 3.75 ug/ml followed by biotinylated anti-goat IgG secondary antibody, alkaline phosphatase-streptavidin and chromogen.



Human Breast (formalin-fixed, paraffin-embedded) stained with WNT3 antibody at 3.75 ug/ml followed by biotinylated anti-goat IgG secondary antibody, alkaline phosphatase-streptavidin and chromogen.



Human Thyroid (formalin-fixed, paraffin-embedded) stained with WNT3 antibody at 3.75 ug/ml followed by biotinylated anti-goat IgG secondary antibody, alkaline phosphatase-streptavidin and chromogen.