

## Product datasheet for **AP22537PU-N**

### PARP2 (389-401) Goat Polyclonal Antibody

#### Product data:

Product Type:	Primary Antibodies
Applications:	ELISA, IHC, WB
Recommended Dilution:	<b>ELISA:</b> 1/8000. <b>Immunohistochemistry on Paraffin Sections:</b> 2.5 µg/ml. <b>Western Blot:</b> 1/8000, 1 - 3 µg/ml.
Reactivity:	Human
Host:	Goat
Clonality:	Polyclonal
Immunogen:	Synthetic peptide from an internal region of human PARP2
Specificity:	This antibody detects PARP2 (Internal).
Formulation:	Tris saline buffer, pH 7.3, 0.5% BSA, 0.02% sodium azide State: Aff - Purified State: Liquid Ig fraction
Concentration:	lot specific
Purification:	Immunoaffinity Chromatography
Conjugation:	Unconjugated
Storage:	Store at 2 - 8 °C for up to three months or (in aliquots) at -20 °C for longer. Avoid repeated freezing and thawing.
Stability:	Shelf life: one year from despatch.
Gene Name:	poly(ADP-ribose) polymerase 2
Database Link:	<a href="#">Entrez Gene 10038 Human Q9UGN5</a>
Background:	PARP2 is poly(ADP-ribosyl)transferase-like 2 protein, which contains a catalytic domain and is capable of catalyzing a poly(ADP-ribosyl)ation reaction. This protein has a catalytic domain which is homologous to that of poly (ADP-ribosyl) transferase, but lacks an N-terminal DNA binding domain which activates the C-terminal catalytic domain of poly (ADP-ribosyl) transferase.
Synonyms:	PARP-2, ADPRT2, ADPRTL2, Poly [ADP-ribose] polymerase 2, PARP 2, EC=2.4.2.30, pADPRT-2

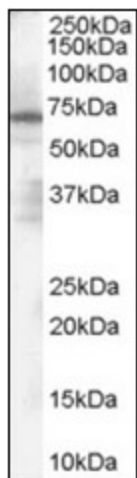


[View online »](#)

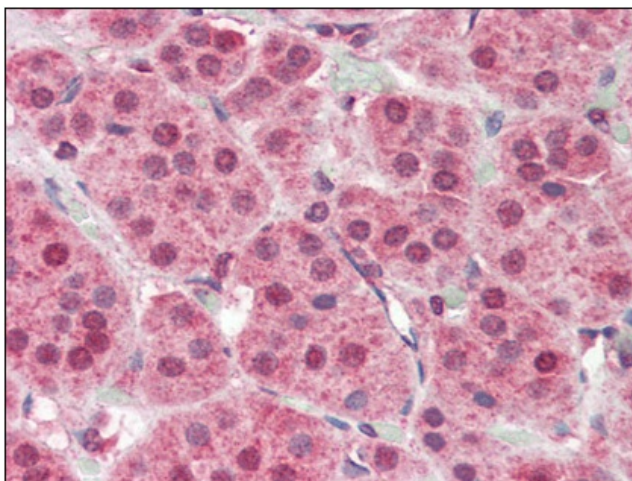
Protein Families: Druggable Genome

Protein Pathways: Base excision repair

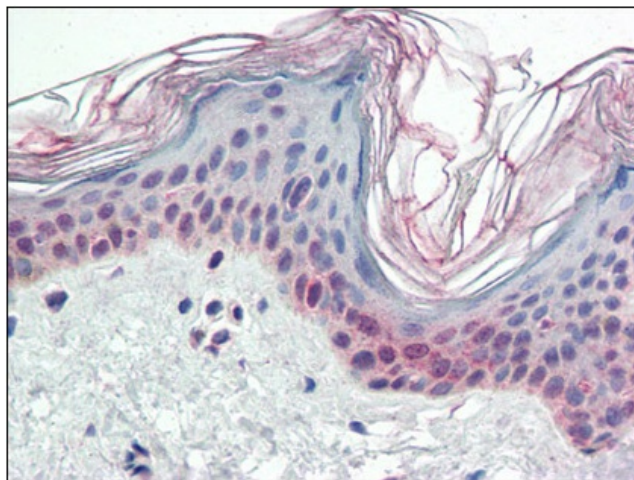
### Product images:



Antibody (1 ug/ml) staining of Human Spleen Lysate (35 ug protein in RIPA buffer). Primary incubation was 1 hour. Detected by chemiluminescence.



Human Adrenal (formalin-fixed, paraffin-embedded) stained with PARP2 antibody at 2.5 ug/ml followed by biotinylated anti-goat IgG secondary antibody, alkaline phosphatase-streptavidin and chromogen.



Human Skin (formalin-fixed, paraffin-embedded) stained with PARP2 antibody at 2.5 ug/ml followed by biotinylated anti-goat IgG secondary antibody, alkaline phosphatase-streptavidin and chromogen.