

Product datasheet for **AP22536PU-N**

ITPR2 (1152-1164) Goat Polyclonal Antibody

Product data:

Product Type:	Primary Antibodies
Applications:	ELISA, IHC
Recommended Dilution:	ELISA: 1/128000. Immunohistochemistry on Paraffin Sections: 3.75 µg/ml.
Reactivity:	Canine, Human, Mouse, Rat, Monkey
Host:	Goat
Clonality:	Polyclonal
Immunogen:	Synthetic peptide from an internal region of human ITPR2
Specificity:	This antibody detects IP3 receptor 2 / ITPR2 (Internal).
Formulation:	Tris saline buffer, pH 7.3, 0.5% BSA, 0.02% sodium azide State: Aff - Purified State: Liquid Ig fraction
Concentration:	lot specific
Purification:	Immunoaffinity chromatography
Conjugation:	Unconjugated
Storage:	Store at 2 - 8 °C for up to three months or (in aliquots) at -20 °C for longer. Avoid repeated freezing and thawing.
Stability:	Shelf life: one year from despatch.
Gene Name:	inositol 1,4,5-trisphosphate receptor type 2
Database Link:	Entrez Gene 16439 Mouse Entrez Gene 81678 Rat Entrez Gene 3709 Human Q14571
Background:	ITPR2 / IP3 Receptor Type 2 belongs to the inositol 1,4,5-triphosphate receptor family, whose members are second messenger intracellular calcium release channels. These proteins mediate a rise in cytoplasmic calcium in response to receptor activated production of inositol triphosphate. Inositol triphosphate receptor-mediated signaling is involved in many processes including cell migration, cell division, smooth muscle contraction, and neuronal signaling.
Synonyms:	Type 2 InsP3 receptor, IP3R2

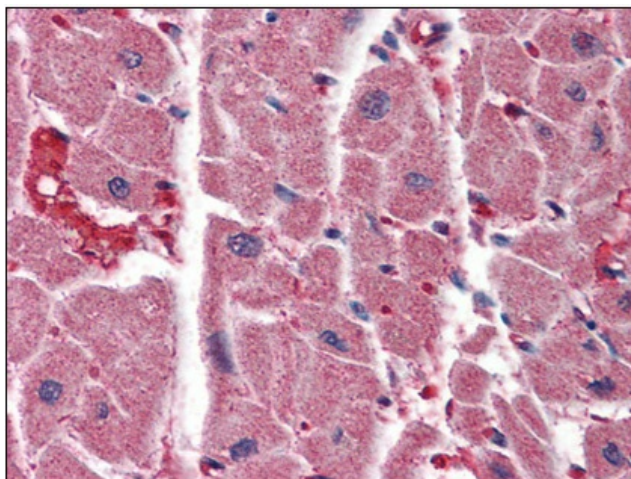


[View online »](#)

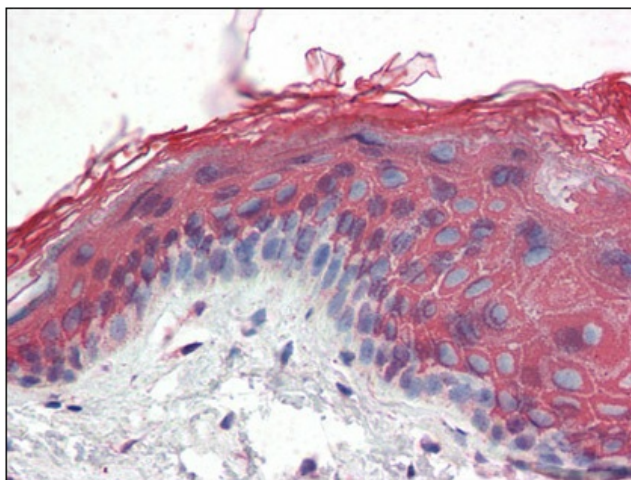
Protein Families: Druggable Genome, Transmembrane

Protein Pathways: Alzheimer's disease, Calcium signaling pathway, Gap junction, GnRH signaling pathway, Long-term depression, Long-term potentiation, Oocyte meiosis, Phosphatidylinositol signaling system, Vascular smooth muscle contraction

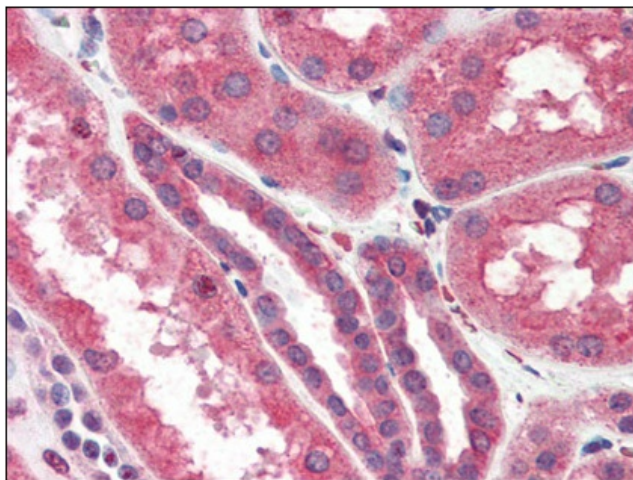
Product images:



Human Heart (formalin-fixed, paraffin-embedded) stained with ITPR2 antibody at 3.75 ug/ml followed by biotinylated anti-goat IgG secondary antibody, alkaline phosphatase-streptavidin and chromogen.



Human Skin (formalin-fixed, paraffin-embedded) stained with ITPR2 antibody at 3.75 ug/ml followed by biotinylated anti-goat IgG secondary antibody, alkaline phosphatase-streptavidin and chromogen.



Human Kidney (formalin-fixed, paraffin-embedded) stained with ITPR2 antibody at 3.75 ug/ml followed by biotinylated anti-goat IgG secondary antibody, alkaline phosphatase-streptavidin and chromogen.