

Product datasheet for **AP22530PU-N**

CPT1B (760-772) Goat Polyclonal Antibody

Product data:

Product Type:	Primary Antibodies
Applications:	ELISA, IHC
Recommended Dilution:	ELISA: 1/16000. Immunohistochemistry on Paraffin Sections: 3.75 µg/ml.
Reactivity:	Human
Host:	Goat
Clonality:	Polyclonal
Immunogen:	Synthetic peptide from C-term of human CPT1B
Specificity:	This antibody detects CPT1B / CPT1-M at (C-term). It is expected to recognise human isoforms a (NP_689452.1; NP_689451.1; NP_004368.1; NP_001138609.1; NP_001138607.1), isoform c (NP_001138606.1) and isoform d (NP_001138608.1).
Formulation:	Tris saline buffer, pH 7.3, 0.5% BSA, 0.02% sodium azide State: Aff - Purified State: Liquid Ig fraction
Concentration:	lot specific
Purification:	Immunoaffinity Chromatography
Conjugation:	Unconjugated
Storage:	Store at 2 - 8 °C for up to three months or (in aliquots) at -20 °C for longer. Avoid repeated freezing and thawing.
Stability:	Shelf life: one year from despatch.
Gene Name:	carnitine palmitoyltransferase 1B
Database Link:	Entrez Gene 1375 Human Q92523
Background:	The protein encoded by this gene, a member of the carnitine/choline acetyltransferase family, is the rate-controlling enzyme of the long-chain fatty acid beta-oxidation pathway in muscle mitochondria. This enzyme is required for the net transport of long-chain fatty acyl-CoAs from the cytoplasm into the mitochondria.



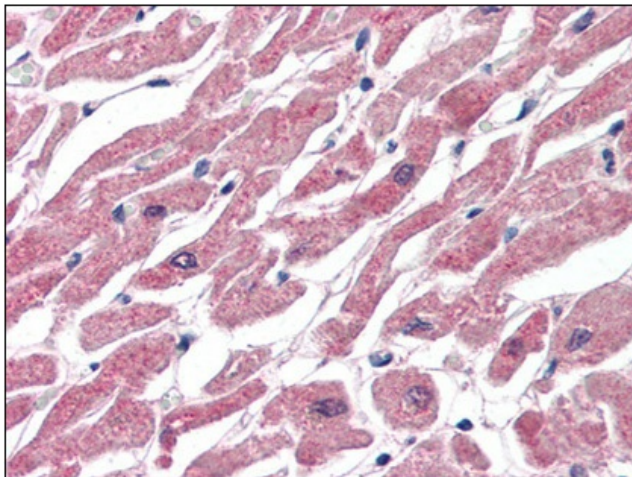
[View online »](#)

Synonyms: Carnitine palmitoyltransferase 1B, KIAA1670

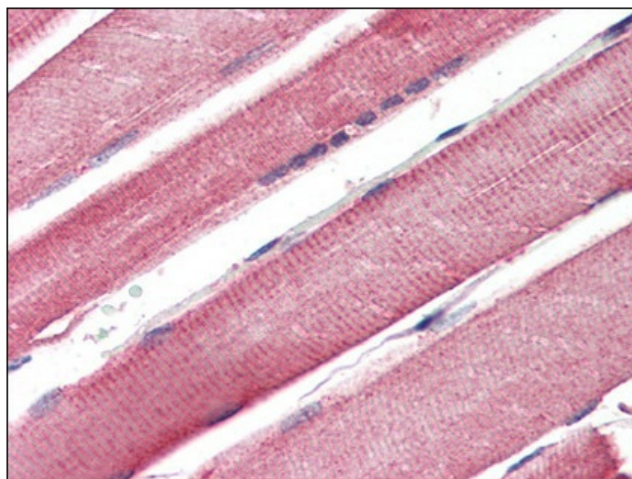
Protein Families: Druggable Genome, Transmembrane

Protein Pathways: Adipocytokine signaling pathway, Fatty acid metabolism, PPAR signaling pathway

Product images:



Human Heart (formalin-fixed, paraffin-embedded) stained with CPT1B antibody at 3.75 ug/ml followed by biotinylated anti-goat IgG secondary antibody, alkaline phosphatase-streptavidin and chromogen.



Human Skeletal Muscle (formalin-fixed, paraffin-embedded) stained with CPT1B antibody at 3.75 ug/ml followed by biotinylated anti-goat IgG secondary antibody, alkaline phosphatase-streptavidin and chromogen.