

Product datasheet for **AP22528PU-N**

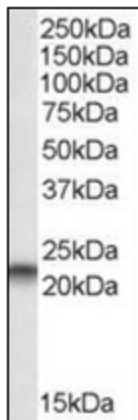
PBP (PEBP1) (175-187) Goat Polyclonal Antibody

Product data:

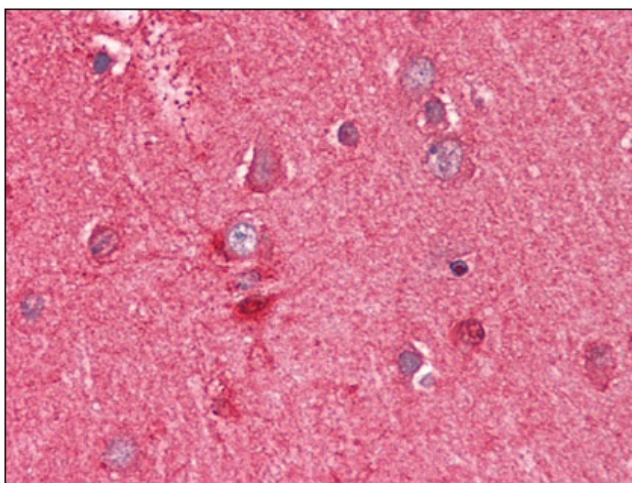
Product Type:	Primary Antibodies
Applications:	ELISA, IHC, WB
Recommended Dilution:	ELISA: 1/16000. Immunohistochemistry on Paraffin Sections: 1.5 µg/ml. Western Blot: 1/16000, 0.01 - 0.03 µg/ml.
Reactivity:	Human, Mouse, Rat, Bovine, Chicken, Equine, Hamster, Monkey, Porcine
Host:	Goat
Clonality:	Polyclonal
Immunogen:	Synthetic peptide from C-term of human PEBP1
Specificity:	This antibody detects PEBP1 / RKIP (C-term).
Formulation:	Tris saline buffer, pH 7.3, 0.5% BSA, 0.02% sodium azide State: Aff - Purified State: Liquid Ig fraction
Concentration:	lot specific
Purification:	Immunoaffinity chromatography
Conjugation:	Unconjugated
Storage:	Store at 2 - 8 °C for up to three months or (in aliquots) at -20 °C for longer. Avoid repeated freezing and thawing.
Stability:	Shelf life: one year from despatch.
Gene Name:	phosphatidylethanolamine binding protein 1
Database Link:	Entrez Gene 23980 Mouse Entrez Gene 29542 Rat Entrez Gene 5037 Human P30086
Background:	Binds ATP, opioids and phosphatidylethanolamine. Has lower affinity for phosphatidylinositol and phosphatidylcholine. Serine protease inhibitor which inhibits thrombin, neuropsin and chymotrypsin but not trypsin, tissue type plasminogen activator and elastase By similarity. Inhibits the kinase activity of RAF1 by inhibiting its activation and by dissociating the RAF1/MEK complex and acting as a competitive inhibitor of MEK phosphorylation.
Synonyms:	PEBP-1, PEBP, Prostatic-binding protein, PBP, Raf kinase inhibitor protein, HCNPpp



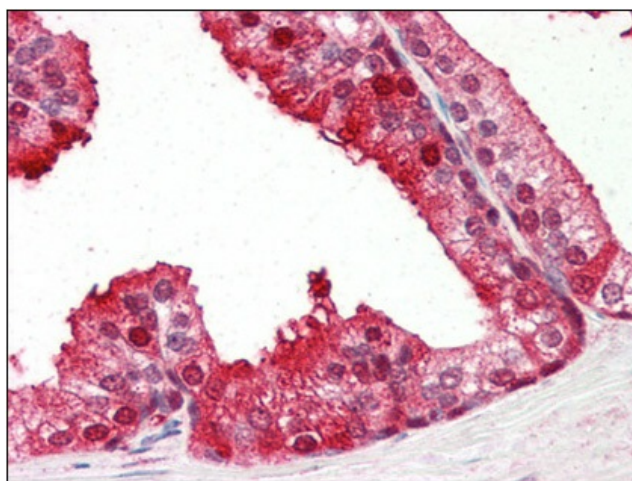
[View online »](#)

Product images:

Antibody staining (0.01 ug/ml) of A549 lysate (RIPA buffer, 35 ug total protein per lane). Primary incubated for 1 hour. Detected by western blot using chemiluminescence.



Human Brain, Cortex (formalin-fixed, paraffin-embedded) stained with PEBP1 antibody at 1.5 ug/ml followed by biotinylated anti-goat IgG secondary antibody, alkaline phosphatase-streptavidin and chromogen.



Human Prostate (formalin-fixed, paraffin-embedded) stained with PEBP1 antibody at 1.5 ug/ml followed by biotinylated anti-goat IgG secondary antibody, alkaline phosphatase-streptavidin and chromogen.