

## Product datasheet for **AP22523PU-N**

### Glutathione Peroxidase 3 (GPX3) (102-114) Goat Polyclonal Antibody

#### Product data:

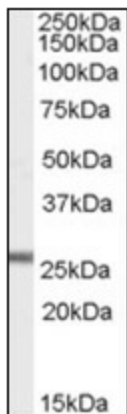
Product Type:	Primary Antibodies
Applications:	ELISA, IHC, WB
Recommended Dilution:	<b>ELISA:</b> 1/1000. <b>Immunohistochemistry on Paraffin Sections:</b> 5 µg/ml. <b>Western Blot:</b> 1 - 3 µg/ml.
Reactivity:	Canine, Human, Mouse, Rat, Bovine, Bat, Equine, Monkey, Porcine
Host:	Goat
Clonality:	Polyclonal
Immunogen:	Synthetic peptide from internal region of human GPX3
Specificity:	This antibody detects Glutathione peroxidase 3 at aa 102-114. It may cross-react with epididymis-specific GPX5 and olfactory epithelium-specific GPX6.
Formulation:	Tris saline buffer, pH 7.3, 0.5% BSA, 0.02% sodium azide State: Liquid Ig fraction
Concentration:	lot specific
Purification:	Immunoaffinity chromatography
Conjugation:	Unconjugated
Storage:	Store at 2 - 8 °C for up to three months or (in aliquots) at -20 °C for longer. Avoid repeated freezing and thawing.
Stability:	Shelf life: one year from despatch.
Gene Name:	glutathione peroxidase 3
Database Link:	<a href="#">Entrez Gene 14778 Mouse</a> <a href="#">Entrez Gene 64317 Rat</a> <a href="#">Entrez Gene 2878 Human</a> <a href="#">P22352</a>
Background:	Glutathione peroxidase catalyzes the reduction of hydrogen peroxide, organic hydroperoxide, and lipid peroxides by reduced glutathione and functions in the protection of cells against oxidative damage. Human plasma glutathione peroxidase has been shown to be a selenium-containing enzyme. GPX3 expression appears to be tissue-specific.
Synonyms:	GPX-3, GPXP, GSHPx-3, GPx-3, GSHPx-P, GSHPXP, GPx-P, GPXP
Protein Families:	Druggable Genome, Secreted Protein



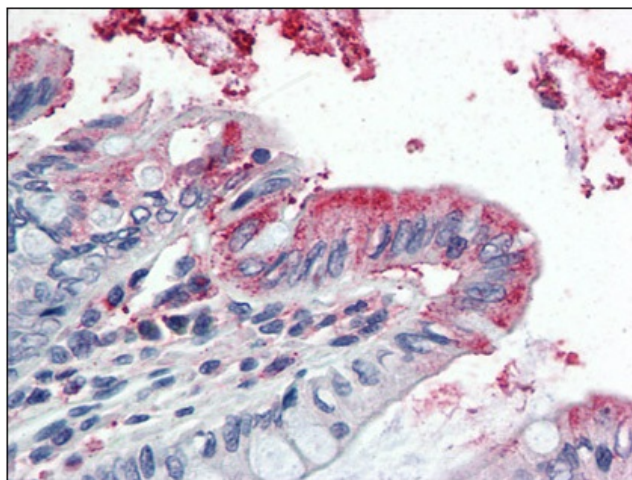
[View online »](#)

Protein Pathways: Arachidonic acid metabolism, Glutathione metabolism

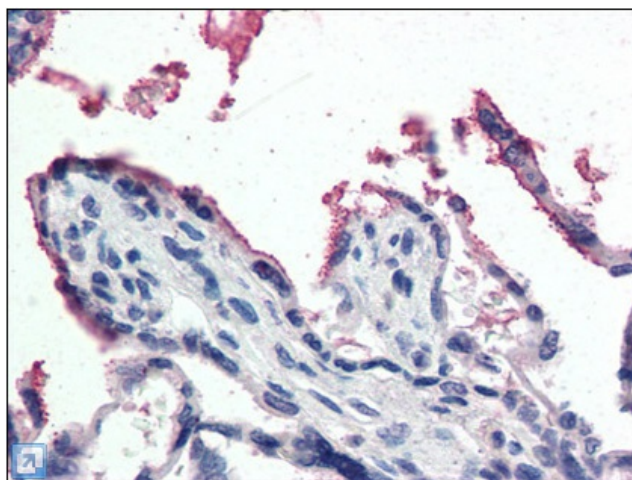
**Product images:**



Antibody (1 ug/ml) staining of Mouse Heart lysate (35 ug protein in RIPA buffer). Primary incubation was 1 hour. Detected by chemiluminescence.



Human Colon (formalin-fixed, paraffin-embedded) stained with GPX3 antibody AP22523PU-N at 5 ug/ml followed by biotinylated anti-goat IgG secondary antibody, alkaline phosphatase-streptavidin and chromogen.



Human Placenta (formalin-fixed, paraffin-embedded) stained with GPX3 antibody AP22523PU-N at 5 ug/ml followed by biotinylated anti-goat IgG secondary antibody, alkaline phosphatase-streptavidin and chromogen.

