

Product datasheet for **AP22522PU-N**

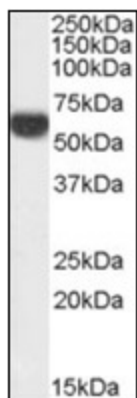
Perilipin-1 (PLIN1) (C-term) Goat Polyclonal Antibody

Product data:

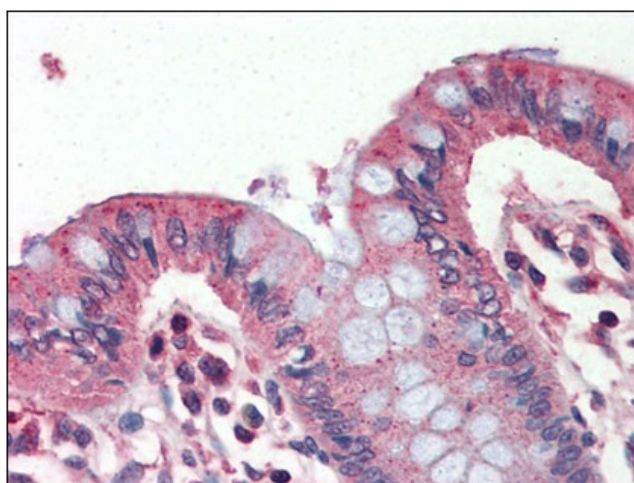
Product Type:	Primary Antibodies
Applications:	ELISA, IHC, WB
Recommended Dilution:	ELISA: 1/32000. Immunohistochemistry on Paraffin Sections: 4 µg/ml. Western Blot: 0.01 - 0.03 µg/ml.
Reactivity:	Canine, Human, Rat, Bovine, Equine, Monkey, Mouse
Host:	Goat
Clonality:	Polyclonal
Immunogen:	Synthetic peptide from (C-term) of human PLIN
Specificity:	This antibody detects Perilipin-1 (C-term).
Formulation:	Tris saline buffer, pH 7.3, 0.5% BSA, 0.02% sodium azide State: Purified State: Liquid Ig fraction
Concentration:	lot specific
Purification:	Immunoaffinity chromatography
Conjugation:	Unconjugated
Storage:	Store at 2 - 8 °C for up to three months or (in aliquots) at -20 °C for longer. Avoid repeated freezing and thawing.
Stability:	Shelf life: one year from despatch.
Gene Name:	perilipin 1
Database Link:	Entrez Gene 25629 Rat Entrez Gene 103968 Mouse Entrez Gene 5346 Human O60240
Synonyms:	Perilipin, PLIN, PLIN1, PLIN-1, PERI
Protein Families:	Druggable Genome
Protein Pathways:	PPAR signaling pathway



[View online »](#)

Product images:

Antibody (0.01 ug/ml) staining of Human Adipose lysate (35 ug protein in RIPA buffer). Primary incubation was 1 hour. Detected by chemiluminescence.



Human Colon (formalin-fixed, paraffin-embedded) stained with PLIN antibody at 4 ug/ml followed by biotinylated anti-goat IgG secondary antibody, alkaline phosphatase-streptavidin and chromogen.