

## Product datasheet for **AP22516PU-N**

### LIS1 (PAFAH1B1) (397-410) Goat Polyclonal Antibody

#### Product data:

Product Type:	Primary Antibodies
Applications:	ELISA, IHC, WB
Recommended Dilution:	<b>ELISA:</b> 1/32000. <b>Immunohistochemistry on Paraffin Sections:</b> 3.75 µg/ml. <b>Western Blot:</b> 1 - 3 µg/ml.
Reactivity:	Bovine, Canine, Human, Mouse, Porcine, Rat, Bat, Chicken, Equine, Hamster, Monkey, Rabbit, Xenopus, Zebrafish
Host:	Goat
Clonality:	Polyclonal
Immunogen:	Peptide from (C-term) of the protein sequence according to NP_000421
Specificity:	This antibody detects PAFAH1B1 / LIS1 at aa 397-410.
Formulation:	Tris-buffered saline, pH 7.3, 0.5% BSA, 0.02% sodium azide State: Aff - Purified State: Liquid Ig fraction
Concentration:	lot specific
Purification:	Immunoaffinity chromatography
Conjugation:	Unconjugated
Storage:	Store at 2 - 8 °C for up to three months or (in aliquots) at -20 °C for longer. Avoid repeated freezing and thawing.
Stability:	Shelf life: one year from despatch.
Gene Name:	platelet activating factor acetylhydrolase 1b regulatory subunit 1
Database Link:	<a href="#">Entrez Gene 18472 Mouse</a> <a href="#">Entrez Gene 83572 Rat</a> <a href="#">Entrez Gene 5048 Human P43034</a>



[View online »](#)

**Background:**

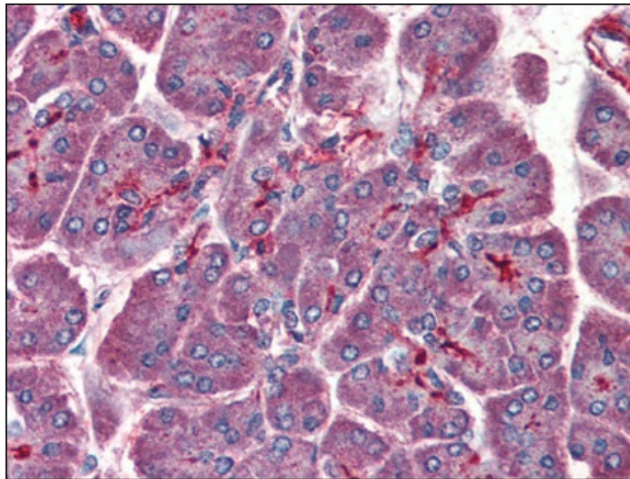
PAFAH1B1 was identified as encoding a gene that when mutated or lost caused the lissencephaly associated with Miller-Dieker lissencephaly syndrome. PAFAH1B1 encodes the non-catalytic alpha subunit of the intracellular Ib isoform of platelet-activating factor acetylhydrolase, a heterotrimeric enzyme that specifically catalyzes the removal of the acetyl group at the SN-2 position of platelet-activating factor (identified as 1-O-alkyl-2-acetyl-sn-glyceryl-3-phosphorylcholine). Two other isoforms of intracellular platelet-activating factor acetylhydrolase exist: one composed of multiple subunits, the other, a single subunit. In addition, a single-subunit isoform of this enzyme is found in serum.

**Synonyms:**

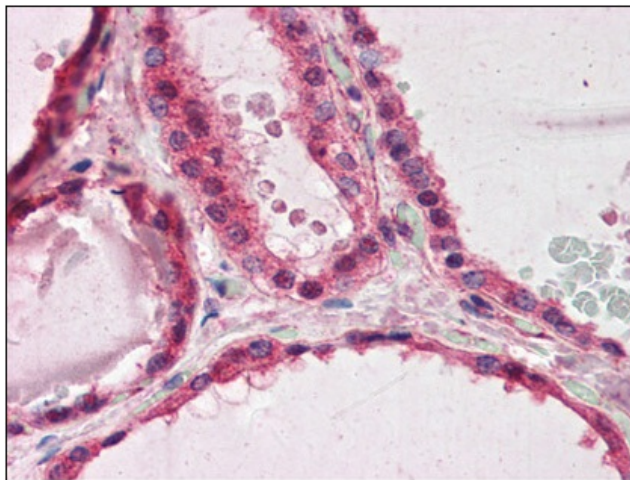
PAF-AH alpha, PAFAH alpha, PAFAHA, Lissencephaly-1 protein, LIS-1, MDCR, MDS

**Protein Pathways:**

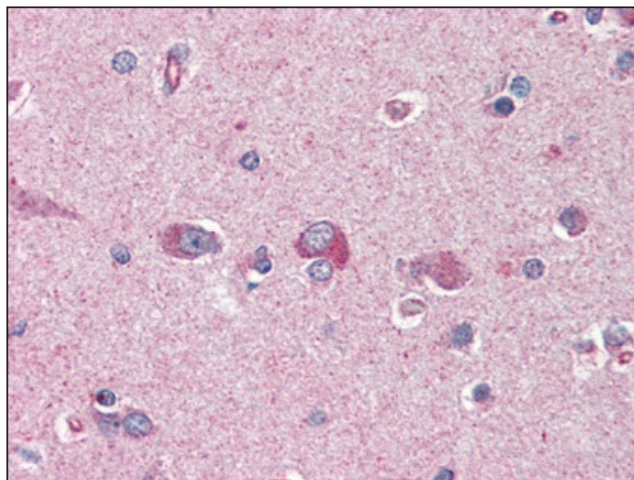
Ether lipid metabolism, Metabolic pathways

**Product images:**

Human Pancreas (formalin-fixed, paraffin-embedded) stained with PAF-AH1B1 antibody at 3.75 ug/ml followed by biotinylated anti-goat IgG secondary antibody, alkaline phosphatase-streptavidin and chromogen.



Human Thyroid (formalin-fixed, paraffin-embedded) stained with PAF-AH1B1 antibody at 3.75 ug/ml followed by biotinylated anti-goat IgG secondary antibody, alkaline phosphatase-streptavidin and chromogen.



Human Brain, Cortex (formalin-fixed, paraffin-embedded) stained with PAFAH1B1 antibody at 3.75 ug/ml followed by biotinylated anti-goat IgG secondary antibody, alkaline phosphatase-streptavidin and chromogen.