

Product datasheet for **AP22515PU-N**

Annexin A1 (ANXA1) (324-337) Goat Polyclonal Antibody

Product data:

Product Type:	Primary Antibodies
Applications:	ELISA, IHC, WB
Recommended Dilution:	Peptide ELISA: 1/4000. Immunohistochemistry on Paraffin Sections: 4 µg/ml. Western Blot: 0.5 - 3 µg/ml.
Reactivity:	Bovine, Canine, Human, Mouse, Porcine, Rat, Bat, Equine, Guinea Pig, Hamster, Monkey, Rabbit
Host:	Goat
Clonality:	Polyclonal
Immunogen:	Peptide from the C Terminus of the protein sequence according to NP_000691.1
Specificity:	This antibody detects Annexin A1 / ANXA1 at aa 324-337.
Formulation:	Tris saline, 0.02% sodium azide, pH 7.3, 0.5% BSA State: Aff - Purified State: Liquid Ig fraction
Concentration:	lot specific
Purification:	Immunoaffinity chromatography
Conjugation:	Unconjugated
Storage:	Store undiluted at 2-8°C for one month or (in aliquots) at -20°C for longer. Avoid repeated freezing and thawing.
Stability:	Shelf life: one year from despatch.
Gene Name:	annexin A1
Database Link:	<u>Entrez Gene 16952 Mouse</u> <u>Entrez Gene 25380 Rat</u> <u>Entrez Gene 702946 Monkey</u> <u>Entrez Gene 301 Human P04083</u>



[View online »](#)

Background:

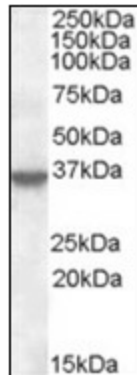
Annexin I belongs to a family of Ca²⁺-dependent phospholipid binding proteins which have a molecular weight of approximately 35000 to 40000 and are preferentially located on the cytosolic face of the plasma membrane. Annexin I protein has an apparent relative molecular mass of 40 kD, with phospholipase A2 inhibitory activity. Since phospholipase A2 is required for the biosynthesis of the potent mediators of inflammation, prostaglandins and leukotrienes, annexin I may have potential anti-inflammatory activity.

Synonyms:

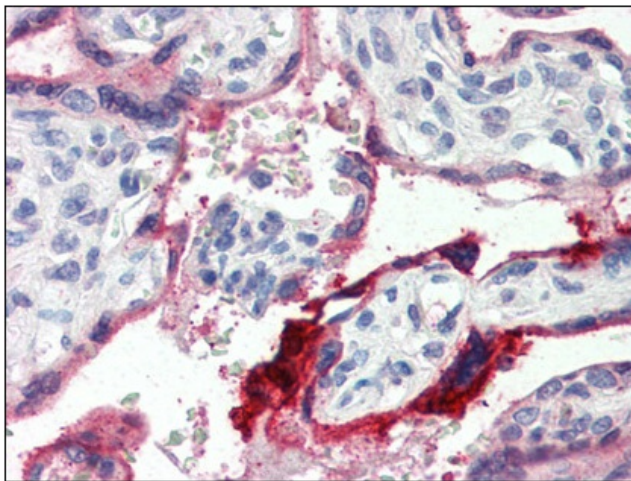
ANX1, LPC1, Annexin-1, Annexin I, Lipocortin I, Calpactin II, Chromobindin-9, p35

Protein Families:

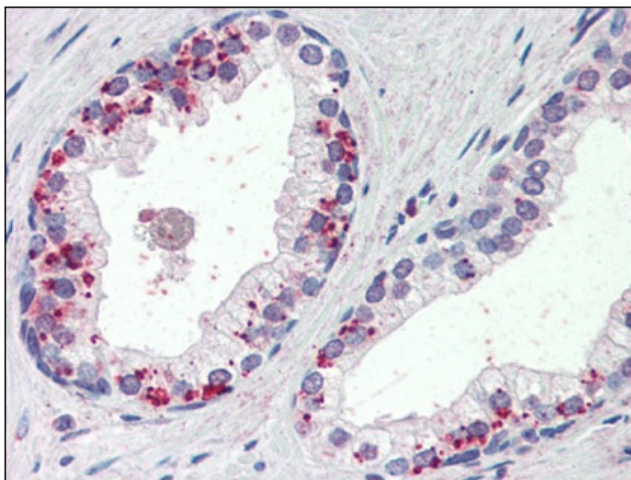
Druggable Genome

Product images:


Antibody (0.5 ug/ml) staining of A431 lysate (35 ug protein in RIPA buffer). Primary incubation was 1 hour. Detected by chemiluminescence.



Human Placenta (formalin-fixed, paraffin-embedded) stained with ANXA1 antibody at 4 ug/ml followed by biotinylated anti-goat IgG secondary antibody, alkaline phosphatase-streptavidin and chromogen.



Human Prostate (formalin-fixed, paraffin-embedded) stained with ANXA1 antibody at 4 ug/ml followed by biotinylated anti-goat IgG secondary antibody, alkaline phosphatase-streptavidin and chromogen.