

## Product datasheet for **AP22513PU-N**

### Ferritin Heavy Chain (FTH1) (221-232) Goat Polyclonal Antibody

#### Product data:

|                       |   |
|-----------------------|---|
| Product Type:         | Primary Antibodies  |
| Applications:         | ELISA, IHC, WB  |
| Recommended Dilution: | <b>ELISA:</b> 1/8000.<br><b>Immunohistochemistry on Paraffin Sections:</b> 4 µg/ml.<br><b>Western Blot:</b> 0.03 - 0.1 µg/ml.   |
| Reactivity:           | Canine, Human, Monkey   |
| Host:                 | Goat  |
| Clonality:            | Polyclonal  |
| Immunogen:            | Peptide from the C Terminus of the protein sequence according to NP_002023.2  |
| Specificity:          | This antibody detects Ferritin heavy chain (FTH1) (C-term).   |
| Formulation:          | Tris saline, 0.02% sodium azide, pH 7.3, 0.5% BSA<br>State: Aff - Purified<br>State: Liquid Ig fraction   |
| Concentration:        | lot specific  |
| Purification:         | Immunoaffinity chromatography   |
| Conjugation:          | Unconjugated  |
| Storage:              | Store at 2 - 8 °C for up to three months or (in aliquots) at -20 °C for longer. Avoid repeated freezing and thawing.  |
| Stability:            | Shelf life: one year from despatch.   |
| Gene Name:            | ferritin heavy chain 1  |
| Database Link:        | <a href="#">Entrez Gene 2495 Human P02794</a>   |
| Background:           | FTH1 / Ferritin Heavy Chain is the heavy subunit of ferritin, the major intracellular iron storage protein in prokaryotes and eukaryotes. It is composed of 24 subunits of the heavy and light ferritin chains. Variation in ferritin subunit composition may affect the rates of iron uptake and release in different tissues. A major function of ferritin is the storage of iron in a soluble and nontoxic state. Defects in ferritin proteins are associated with several neurodegenerative diseases. |



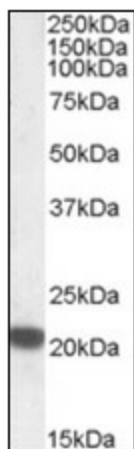
[View online »](#)

**Synonyms:** FTH-1, FTH, FTHL6, Ferritin H subunit, EC=1.16.3.1, Cell proliferation-inducing gene 15 protein

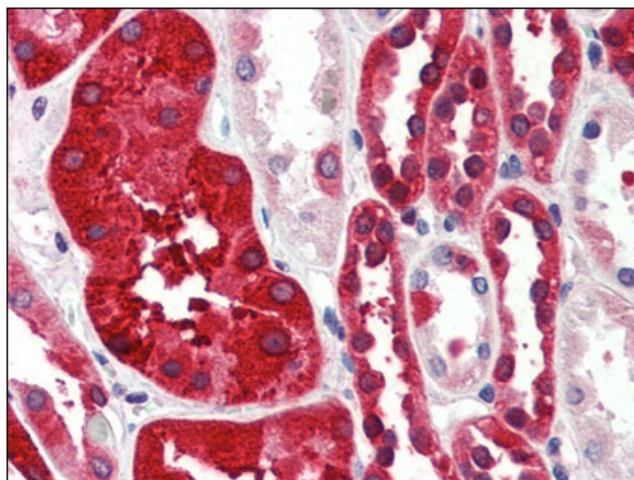
**Protein Families:** Druggable Genome

**Protein Pathways:** Porphyrin and chlorophyll metabolism

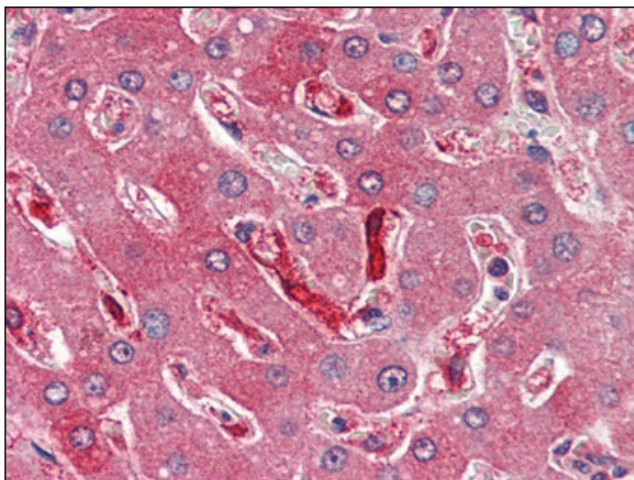
**Product images:**



Antibody (0.05 ug/ml) staining of Human Placenta lysate (35 mg protein in RIPA buffer). Primary incubation was 1 hour. Detected by chemiluminescence.



Human Kidney (formalin-fixed, paraffin-embedded) stained with FTH1 antibody at 4 ug/ml followed by biotinylated anti-goat IgG secondary antibody, alkaline phosphatase-streptavidin and chromogen.



Human Liver (formalin-fixed, paraffin-embedded) stained with FTH1 antibody at 4 ug/ml followed by biotinylated anti-goat IgG secondary antibody, alkaline phosphatase-streptavidin and chromogen.