

Product datasheet for **AP22508PU-N**

Aromatase (CYP19A1) (475-486) Goat Polyclonal Antibody

Product data:

Product Type:	Primary Antibodies
Applications:	ELISA, IHC, WB
Recommended Dilution:	ELISA: 1/128000. Immunohistochemistry on Paraffin Sections: 4 µg/ml. Western Blot: 0.1 - 0.3 µg/ml.
Reactivity:	Human
Host:	Goat
Clonality:	Polyclonal
Immunogen:	Synthetic peptide from internal region of human CYP19A1
Specificity:	This antibody detects Aromatase at aa 475-486. It is expected to recognise both reported isoforms (NP_000094.2 and NP_112503.1), which are identical.
Formulation:	Tris saline buffer, pH 7.3, 0.5% BSA, 0.02% sodium azide State: Aff - Purified State: Liquid Ig fraction
Concentration:	lot specific
Purification:	Immunoaffinity chromatography
Conjugation:	Unconjugated
Storage:	Store at 2 - 8 °C for up to three months or (in aliquots) at -20 °C for longer. Avoid repeated freezing and thawing.
Stability:	Shelf life: one year from despatch.
Gene Name:	cytochrome P450 family 19 subfamily A member 1
Database Link:	Entrez Gene 1588 Human P11511
Background:	Aromatase, also known as estrogen synthetase, is a P450 enzyme that catalyzes the formation of aromatic C18 estrogens from C19 androgens. Aromatase is present in many tissues including skin, muscle, brain, adipose, and placenta where it may contribute to sex-specific differences in cellular metabolism.



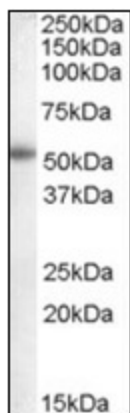
[View online »](#)

Synonyms: Cytochrome P450 19A1, CYPXIX, Estrogen synthetase, P450AROM, CYP19A1, ARO1, CYAR, CYP19

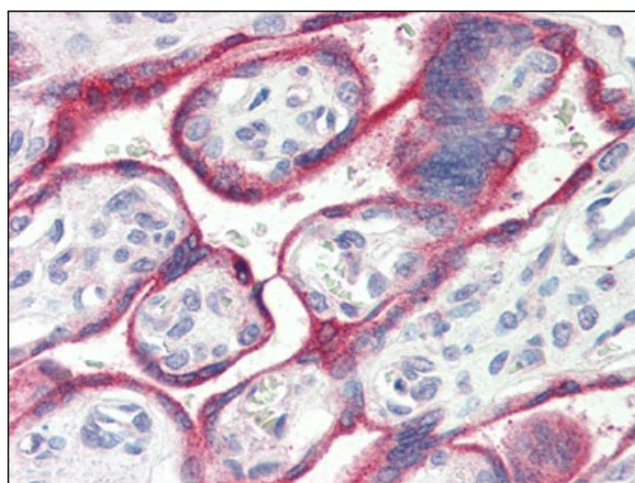
Protein Families: Druggable Genome, P450

Protein Pathways: Androgen and estrogen metabolism, Metabolic pathways

Product images:



Antibody (0.1 ug/ml) staining of Human Placenta lysate (35 ug protein in RIPA buffer). Primary incubation was 1 hour. Detected by chemiluminescence.



Human Placenta (formalin-fixed, paraffin-embedded) stained with CYP19A1 antibody at 4 ug/ml followed by biotinylated anti-goat IgG secondary antibody, alkaline phosphatase-streptavidin and chromogen.