

Product datasheet for **AP22503PU-N**

Leptin Receptor (LEPR) (829-841) Goat Polyclonal Antibody

Product data:

Product Type:	Primary Antibodies
Applications:	ELISA, IHC, WB
Recommended Dilution:	Peptide ELISA: 1/16000. Immunohistochemistry on Paraffin Sections: 4 µg/ml. Western Blot: 1-3 µg/ml.
Reactivity:	Canine, Human
Host:	Goat
Clonality:	Polyclonal
Immunogen:	Synthetic peptide C-TQDDIEKHQSDAG from an internal region of human LEPR / Leptin Receptor (NP_002294.2; NP_001003679.1; NP_001003680.1). Epitope: aa829-841
Specificity:	This antibody detects CD295 / Leptin Receptor at aa 829-841. The antibody is expected to recognise all three reported isoforms (NP_002294.2; NP_001003679.1; NP_001003680.1).
Formulation:	Tris-buffered saline, pH 7.3, 0.5% BSA, 0.02% Sodium Azide State: Aff - Purified State: Liquid Ig fraction
Concentration:	lot specific
Purification:	Immunoaffinity chromatography
Conjugation:	Unconjugated
Storage:	Store undiluted at 2-8°C for one month or (in aliquots) at -20°C for longer. Avoid repeated freezing and thawing.
Stability:	Shelf life: one year from despatch.
Gene Name:	leptin receptor
Database Link:	Entrez Gene 3953 Human P48357



[View online »](#)

Background:

LEPR / Leptin Receptor belongs to the gp130 family of cytokine receptors that are known to stimulate gene transcription via activation of cytosolic STAT proteins. This protein is a receptor for leptin (an adipocyte-specific hormone that regulates body weight), and is involved in the regulation of fat metabolism, as well as in a novel hematopoietic pathway that is required for normal lymphopoiesis. Mutations in this gene have been associated with obesity and pituitary dysfunction.

Synonyms:

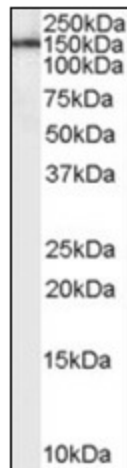
LEP-R, OB receptor, HuB219, LEPR, DB, OBR, OB-R

Protein Families:

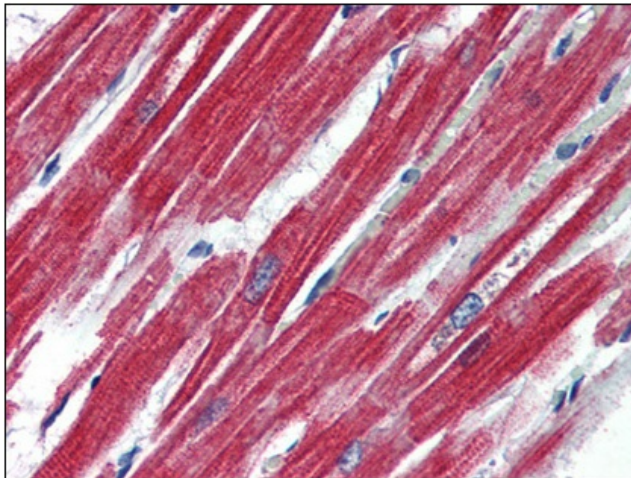
Druggable Genome, Secreted Protein, Transmembrane

Protein Pathways:

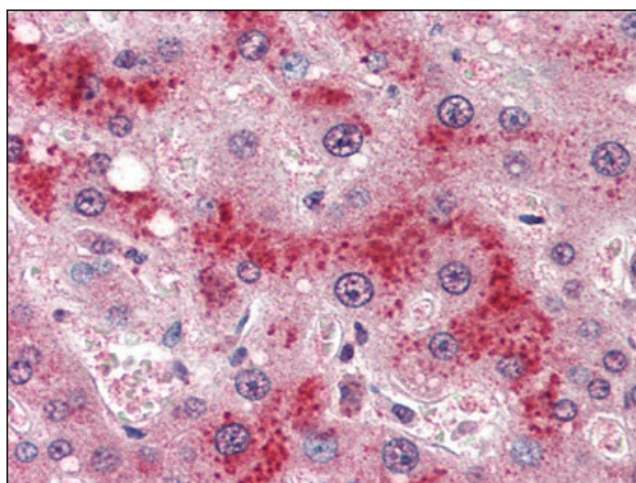
Adipocytokine signaling pathway, Cytokine-cytokine receptor interaction, Jak-STAT signaling pathway, Neuroactive ligand-receptor interaction

Product images:


Western Blot analysis of human brain lysate



Human Heart (formalin-fixed, paraffin-embedded) stained with LEPR antibody at 4 ug/ml followed by biotinylated anti-goat IgG secondary antibody, alkaline phosphatase-streptavidin and chromogen.



Human Liver (formalin-fixed, paraffin-embedded) stained with LEPR antibody at 4 ug/ml followed by biotinylated anti-goat IgG secondary antibody, alkaline phosphatase-streptavidin and chromogen.