

## Product datasheet for **AP22500PU-N**

### Glycophorin A (GYPA) (139-150) Goat Polyclonal Antibody

#### Product data:

Product Type:	Primary Antibodies
Applications:	ELISA, IHC, WB
Recommended Dilution:	<b>ELISA:</b> 1/4000. <b>Immunohistochemistry on Paraffin Sections:</b> 2 µg/ml. <b>Western Blot:</b> 1 - 3 µg/ml.
Reactivity:	Human
Host:	Goat
Clonality:	Polyclonal
Immunogen:	Synthetic peptide from the C-terminus of human GYPA / Glycophorin A (NP_002090.2)
Specificity:	This antibody detects CD235a / GYPA (C-term).
Formulation:	Tris-buffered saline, pH 7.3, 0.5% BSA, 0.02% sodium azide State: Aff - Purified State: Liquid Ig fraction
Concentration:	lot specific
Purification:	Immunoaffinity chromatography
Conjugation:	Unconjugated
Storage:	Store at 2 - 8 °C for up to three months or (in aliquots) at -20 °C for longer. Avoid repeated freezing and thawing.
Stability:	Shelf life: one year from despatch.
Gene Name:	glycophorin A (MNS blood group)
Database Link:	<a href="#">Entrez Gene 2993 Human P02724</a>
Background:	Glycophorin A is the major intrinsic membrane protein of the erythrocyte. The N-terminal glycosylated segment, which lies outside the erythrocyte membrane, has MN blood group receptors. Appears to be important for the function of SLC4A1 and is required for high activity of SLC4A1. May be involved in translocation of SLC4A1 to the plasma membrane. Is a receptor for influenza virus.
Synonyms:	Glycophorin-A, GPA, PAS-2, Sialoglycoprotein alpha, MN sialoglycoprotein

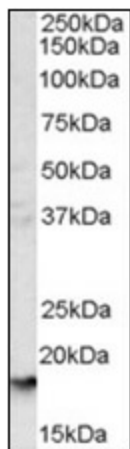


[View online »](#)

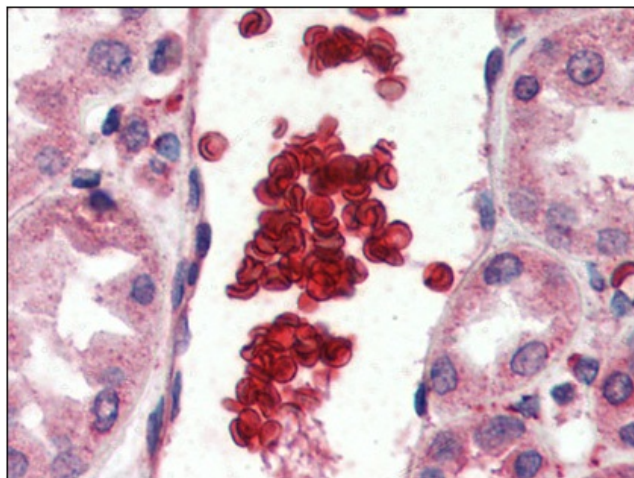
Protein Families: ES Cell Differentiation/IPS, Transmembrane

Protein Pathways: Hematopoietic cell lineage

### Product images:



(1 ug/ml) Staining of Human Liver lysate (35 ug protein in RIPA buffer). Primary incubation was 1 hour. Detected by chemiluminescence.



Human Red Blood Cells (formalin-fixed, paraffin-embedded) stained with GYPA antibody at 2 ug/ml followed by biotinylated anti-goat IgG secondary antibody, alkaline phosphatase-streptavidin and chromogen.