

## Product datasheet for **AP22499PU-N**

### MTLRP (GHRL) (103-117) Goat Polyclonal Antibody

#### Product data:

Product Type:	Primary Antibodies
Applications:	ELISA, IHC
Recommended Dilution:	<b>ELISA:</b> 1/8000. <b>Immunohistochemistry on Paraffin Sections:</b> 2 µg/ml.
Reactivity:	Hamster, Human, Monkey, Mouse, Porcine, Rat
Host:	Goat
Clonality:	Polyclonal
Immunogen:	GHRL antibody was raised against synthetic peptide from C-terminus of human GHRL.
Specificity:	This antibody reacts to Growth Hormone Secretagogue, Ghrelin (GHRL) at aa 103-117. It is expected to recognise all reported isoforms.
Formulation:	Tris saline buffer, pH 7.3 containing 0.5% BSA, 0.02% sodium azide State: Aff - Purified State: Liquid purified Ig fraction
Concentration:	lot specific
Purification:	Immunoaffinity Chromatography
Conjugation:	Unconjugated
Storage:	Store undiluted at 2-8°C for one month or (in aliquots) at -20°C for longer. Avoid repeated freezing and thawing.
Stability:	Shelf life: one year from despatch.
Gene Name:	ghrelin/obestatin prepropeptide
Database Link:	<a href="#">Entrez Gene 59301 Rat</a> <a href="#">Entrez Gene 51738 Human</a> <a href="#">Q9UBU3</a>
Background:	GHRL / Ghrelin Preproprotein is the ghrelin-obestatin preproprotein that is cleaved to yield two peptides, ghrelin and obestatin. Ghrelin is a powerful appetite stimulant and plays an important role in energy homeostasis. Its secretion is initiated when the stomach is empty, whereupon it binds to the growth hormone secretagogue receptor in the hypothalamus which results in the secretion of growth hormone (somatotropin).

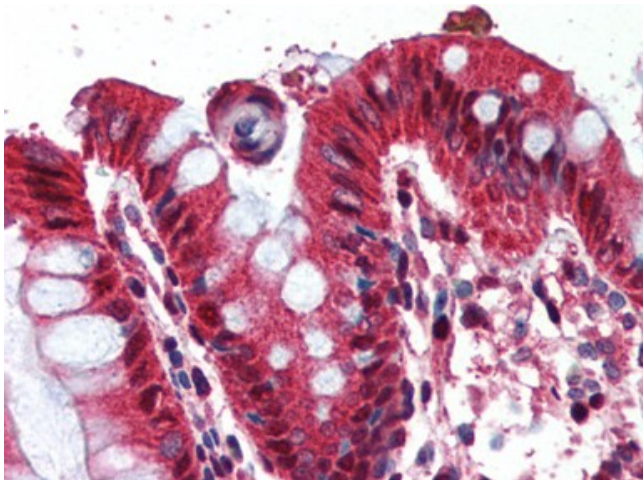


[View online »](#)

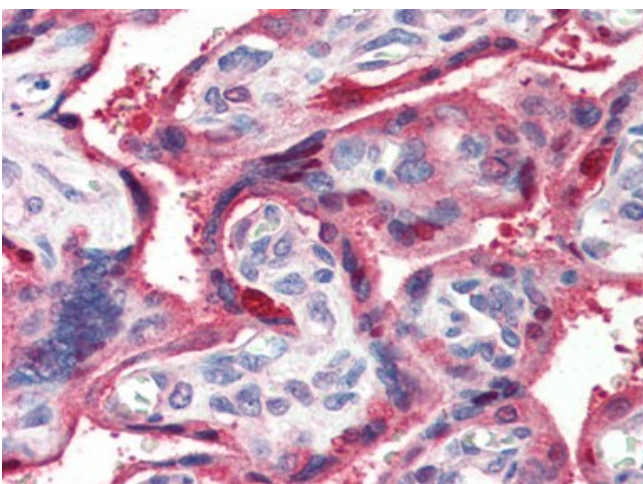
**Synonyms:** Appetite-regulating hormone, Growth hormone-releasing peptide, Ghrelin-27, Ghrelin-28, Obestatin, Motilin-related peptide, MTLRP

**Protein Families:** Druggable Genome, Secreted Protein, Transmembrane

**Product images:**



Human Colon (formalin-fixed, paraffin-embedded) stained with GHRL antibody at 2 ug/ml followed by biotinylated anti-goat IgG secondary antibody, alkaline phosphatase-streptavidin and chromogen.



Human Placenta (formalin-fixed, paraffin-embedded) stained with GHRL antibody at 2 ug/ml followed by biotinylated anti-goat IgG secondary antibody, alkaline phosphatase-streptavidin and chromogen.