

Product datasheet for **AP22497PU-N**

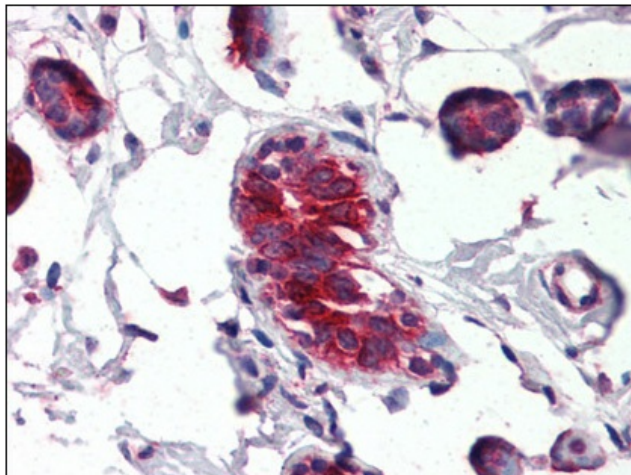
Mammaglobin A (SCGB2A2) (34-45) Goat Polyclonal Antibody

Product data:

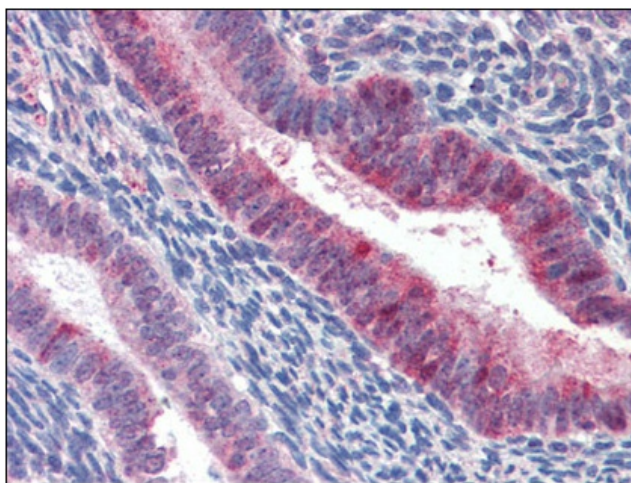
Product Type:	Primary Antibodies
Applications:	ELISA, IHC
Recommended Dilution:	ELISA: 1/32000. Immunohistochemistry on Paraffin Sections: 4 µg/ml.
Reactivity:	Human
Host:	Goat
Clonality:	Polyclonal
Immunogen:	Synthetic peptide from an Internal region of human SCGB2A2
Specificity:	This antibody detects SCGB2A2 / Mammaglobin A (Internal).
Formulation:	Tris saline buffer, pH 7.3, 0.5% BSA, 0.02% sodium azide State: Aff - Purified State: Liquid Ig fraction
Concentration:	lot specific
Purification:	Immunoaffinity chromatography
Conjugation:	Unconjugated
Storage:	Store at 2 - 8 °C for up to three months or (in aliquots) at -20 °C for longer. Avoid repeated freezing and thawing.
Stability:	Shelf life: one year from despatch.
Gene Name:	secretoglobin family 2A member 2
Database Link:	Entrez Gene 4250 Human Q13296
Synonyms:	Mammaglobin-A, Mammaglobin-1, Secretoglobin family 2A member 2, MGB1, UGB2, Prostatein peptide C3, Prostatic steroid-binding protein C3



[View online »](#)

Product images:

Human Breast (formalin-fixed, paraffin-embedded) stained with SCGB2A2 antibody at 4 ug/ml followed by biotinylated anti-goat IgG secondary antibody, alkaline phosphatase-streptavidin and chromogen.



Human Uterus (formalin-fixed, paraffin-embedded) stained with SCGB2A2 antibody at 4 ug/ml followed by biotinylated anti-goat IgG secondary antibody, alkaline phosphatase-streptavidin and chromogen.