

Product datasheet for **AP22491PU-N**

LXR beta (NR1H2) (2-15) Goat Polyclonal Antibody

Product data:

Product Type:	Primary Antibodies
Applications:	ELISA, IHC, WB
Recommended Dilution:	ELISA: 1/64000. Immunohistochemistry on Paraffin Sections: 3 µg/ml. Western Blot: 1 - 3 µg/ml.
Reactivity:	Canine, Human, Mouse, Rat
Host:	Goat
Clonality:	Polyclonal
Immunogen:	Synthetic peptide from (N-term) of human NR1H2
Specificity:	This antibody detects NR1H2 (N-term).
Formulation:	Tris saline buffer, pH 7.3, 0.5% BSA, 0.02% sodium azide State: Aff - Purified State: Liquid Ig fraction
Concentration:	lot specific
Purification:	Immunoaffinity chromatography
Conjugation:	Unconjugated
Storage:	Store at 2 - 8 °C for up to three months or (in aliquots) at -20 °C for longer. Avoid repeated freezing and thawing.
Stability:	Shelf life: one year from despatch.
Gene Name:	nuclear receptor subfamily 1 group H member 2
Database Link:	Entrez Gene 22260 Mouse Entrez Gene 58851 Rat Entrez Gene 7376 Human P55055



[View online »](#)

Background:

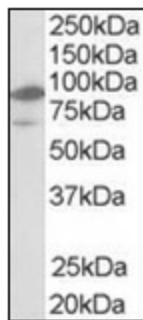
Liver X receptor beta (LXR beta), a NR1 thyroid hormone-like receptor, has been shown to affect cholesterol and bile acid metabolism, as well as fatty acid metabolism. LXR beta mediates gene products controlling intracellular cholesterol homeostasis through the interaction with oxysterols including 22(R)-hydroxycholesterol, 24(S)-hydroxycholesterol, and 24(S),25-epoxycholesterol. LXR beta binds as a heterodimer to target sequences with retinoid X receptors and has been shown to activate a diverse set of genes involved in cholesterol and fatty acid metabolism, including ABCA1, ABCG5, ABCG8, SREBP-1c, fatty acid synthase (FAS), and the apoE/C-I/C-IV/C-II gene cluster upon ligand activation. Recently both LXR alpha and LXR beta have been shown to be important factors in atherosclerosis (Tangirala et al. 2002).

Synonyms:

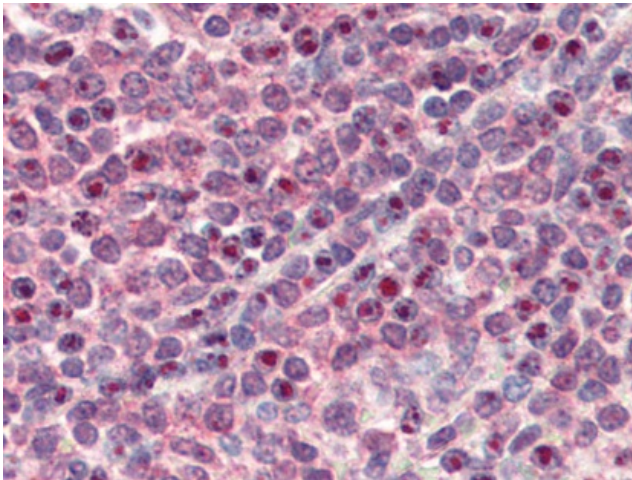
LXRB, NER, UNR

Protein Families:

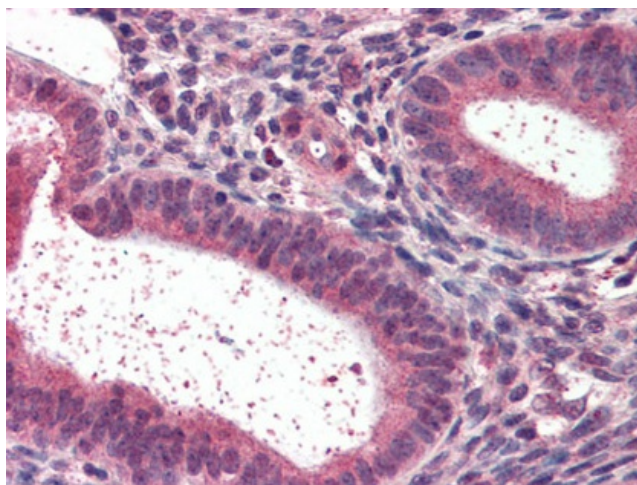
Druggable Genome, Nuclear Hormone Receptor, Transcription Factors

Product images:

Antibody (1 ug/ml) staining of human bone marrow lysate (35 ug protein in RIPA buffer). Primary incubation was 1 hour. Detected by chemiluminescence.



Human Spleen (formalin-fixed, paraffin-embedded) stained with NR1H2 antibody at 3 ug/ml followed by biotinylated anti-goat IgG secondary antibody, alkaline phosphatase-streptavidin and chromogen.



Human Uterus (formalin-fixed, paraffin-embedded) stained with NR1H2 antibody at 3 ug/ml followed by biotinylated anti-goat IgG secondary antibody, alkaline phosphatase-streptavidin and chromogen.