

## Product datasheet for **AP22477PU-N**

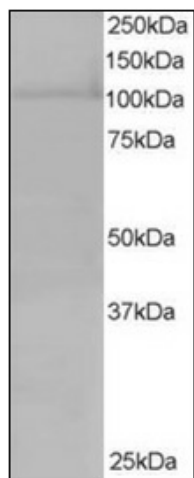
### RanBP16 (XPO7) (1075-1087) Goat Polyclonal Antibody

#### Product data:

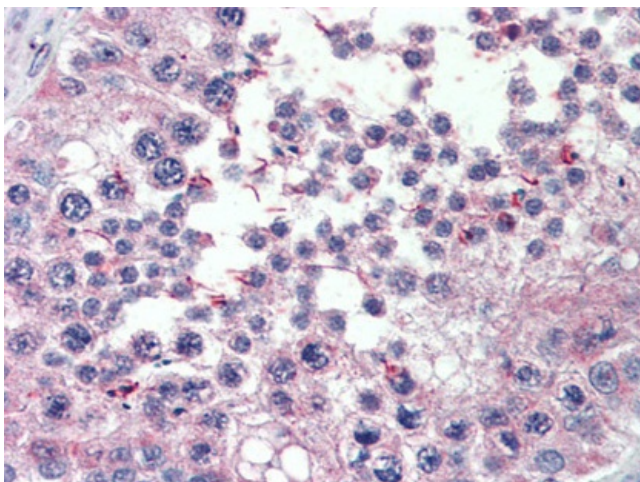
Product Type:	Primary Antibodies
Applications:	ELISA, IHC, WB
Recommended Dilution:	<b>ELISA.</b> <b>Immunohistochemistry on Paraffin Sections:</b> 5 µg/ml. <b>Western Blot:</b> 0.5 - 1 µg/ml.
Reactivity:	Human, Mouse, Bovine, Bat, Canine, Chicken, Equine, Hamster, Monkey, Porcine, Rat, Zebrafish
Host:	Goat
Clonality:	Polyclonal
Immunogen:	Synthetic peptide from (C-term) of human XPO7
Specificity:	This antibody detects XPO7 / Exportin-7 at aa 1075-1087.
Formulation:	Tris saline buffer, pH 7.3, 0.5% BSA, 0.02% sodium azide State: Aff - Purified State: Liquid Ig fraction
Purification:	Immunoaffinity chromatography
Conjugation:	Unconjugated
Storage:	Store at 2 - 8 °C for up to one month or (in aliquots) at -20 °C for longer. Avoid repeated freezing and thawing.
Stability:	Shelf life: one year from despatch.
Gene Name:	exportin 7
Database Link:	<a href="#">Entrez Gene 65246 Mouse</a> <a href="#">Entrez Gene 361070 Rat</a> <a href="#">Entrez Gene 23039 Human Q9UIA9</a>
Background:	Mediates the nuclear export of proteins (cargos) with broad substrate specificity. In the nucleus binds cooperatively to its cargo and to the GTPase Ran in its active GTP-bound form. Docking of this trimeric complex to the nuclear pore complex (NPC) is mediated through binding to nucleoporins.
Synonyms:	Exp7, KIAA0745, RANBP16
Protein Families:	Druggable Genome



[View online »](#)

**Product images:**

Antibody staining (0.5 ug/ml) of HeLa lysate (RIPA buffer, 35 ug total protein per lane). Primary incubated for 1 hour. Detected by western blot using chemiluminescence.



Human Testis (formalin-fixed, paraffin-embedded) stained with XPO7 antibody AP22477PU-N at 5 ug/ml followed by biotinylated anti-goat IgG secondary antibody, alkaline phosphatase-streptavidin and chromogen.