

Product datasheet for **AP22476PU-N**

GGA3 (702-713) Goat Polyclonal Antibody

Product data:

| | |
|-----------------------|---|
| Product Type: | Primary Antibodies |
| Applications: | ELISA, IHC |
| Recommended Dilution: | ELISA: 1/16000. Immunohistochemistry on Paraffin Sections: 2.5 µg/ml. |
| Reactivity: | Canine, Human, Mouse, Rat, Bat, Equine, Monkey, Porcine, Rabbit |
| Host: | Goat |
| Clonality: | Polyclonal |
| Immunogen: | Synthetic peptide from (C-term) of human GGA3 |
| Specificity: | This antibody detects GGA3 at aa 702-713. |
| Formulation: | Tris saline buffer, pH 7.3, 0.5% BSA, 0.02% sodium azide State: Aff - Purified State: Liquid Ig fraction |
| Concentration: | lot specific |
| Purification: | Immunoaffinity chromatography |
| Conjugation: | Unconjugated |
| Storage: | Store at 2 - 8 °C for up to one month or (in aliquots) at -20 °C for longer. Avoid repeated freezing and thawing. |
| Stability: | Shelf life: one year from despatch. |
| Gene Name: | golgi associated, gamma adaptin ear containing, ARF binding protein 3 |
| Database Link: | Entrez Gene 260302 Mouse Entrez Gene 360658 Rat Entrez Gene 23163 Human Q9NZ52 |
| Background: | GGA3 is a member of the Golgi-localized, gamma adaptin ear-containing, ARF-binding (GGA) family. This family includes ubiquitous coat proteins that regulate the trafficking of proteins between the trans-Golgi network and the lysosome. These proteins share an amino-terminal VHS domain which mediates sorting of the mannose 6-phosphate receptors at the trans-Golgi network. They also contain a carboxy-terminal region with homology to the ear domain of gamma-adaptins. |
| Synonyms: | KIAA0154 |

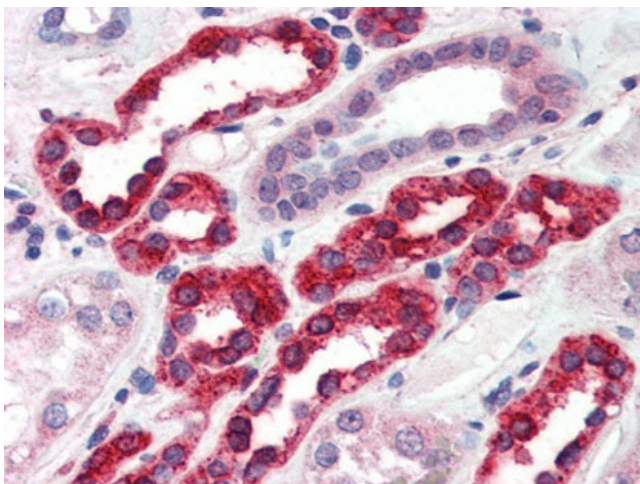


[View online »](#)

Protein Families: Druggable Genome

Protein Pathways: Lysosome

Product images:



Human Kidney (formalin-fixed, paraffin-embedded) stained with GGA3 antibody AP22476PU-N at 2.5 ug/ml followed by biotinylated anti-goat IgG secondary antibody, alkaline phosphatase-streptavidin and chromogen.