

## Product datasheet for **AP22474PU-N**

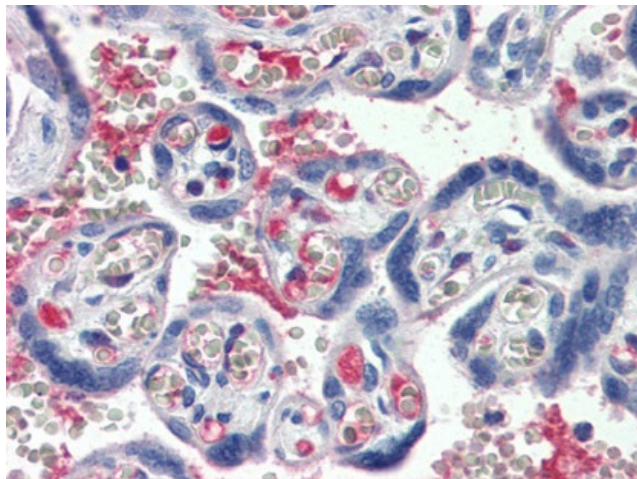
### C1S Goat Polyclonal Antibody

#### Product data:

Product Type:	Primary Antibodies
Applications:	ELISA, IHC
Recommended Dilution:	<b>ELISA.</b> <b>Immunohistochemistry on Paraffin Sections:</b> 5 µg/ml.
Reactivity:	Human
Host:	Goat
Isotype:	IgG
Clonality:	Polyclonal
Immunogen:	Complement component 1 subunit (C1s) purified from human plasma
Specificity:	This antibody recognizes C1s.
Formulation:	10 mM HEPES, pH 7.4, 0.15 M sodium chloride, 50% glycerol, containing no preservative State: Purified State: Liquid Ig fraction
Concentration:	lot specific
Purification:	Immunoaffinity chromatography
Conjugation:	Unconjugated
Storage:	Store at 2 - 8 °C for up to one month or (in aliquots) at -20 °C for longer. Avoid repeated freezing and thawing.
Stability:	Shelf life: one year from despatch.
Gene Name:	complement component 1, s subcomponent
Database Link:	<a href="#">Entrez Gene 716 Human P09871</a>
Synonyms:	C1 esterase, Complement C1s, Complement 1s
Protein Families:	Druggable Genome, Protease
Protein Pathways:	Complement and coagulation cascades, Systemic lupus erythematosus



[View online »](#)

**Product images:**

Human Placenta (formalin-fixed, paraffin-embedded) stained with C1S antibody at 5 ug/ml followed by biotinylated anti-goat IgG secondary antibody, alkaline phosphatase-streptavidin and chromogen.