

Product datasheet for **AP22463PU-N**

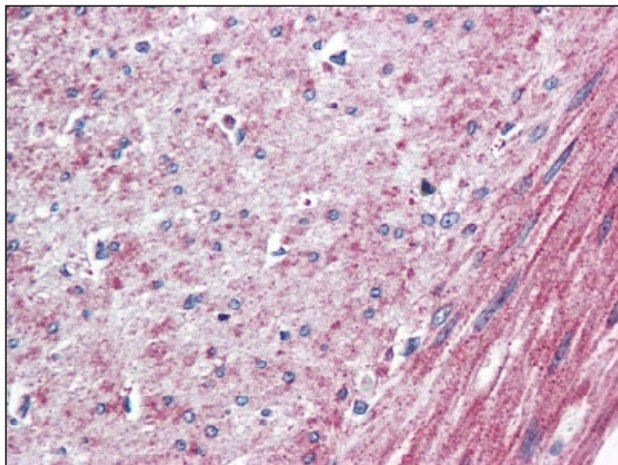
ETL (ADGRL4) (N-term, extracell.dom) Rabbit Polyclonal Antibody

Product data:

Product Type:	Primary Antibodies
Applications:	ELISA, IHC
Recommended Dilution:	ELISA. Immunohistochemistry on Paraffin Sections: 10 µg/ml.
Reactivity:	Human, Monkey
Host:	Rabbit
Isotype:	IgG
Clonality:	Polyclonal
Immunogen:	Synthetic 19 amino acid peptide from N-terminal extracellular domain of human ELTD1
Specificity:	Recognizes N-terminal extracellular domain of ETL Protein (ELTD1).
Formulation:	PBS containing 0.09% Sodium Azide as preservative State: Aff - Purified State: Liquid purified IgG fraction
Concentration:	lot specific
Purification:	Immunoaffinity Chromatography
Conjugation:	Unconjugated
Storage:	Store the antibody undiluted at 2-8°C for one month or (in aliquots) at -20°C to -70°C for longer. Avoid repeated freezing and thawing.
Stability:	Shelf life: one year from despatch.
Gene Name:	adhesion G protein-coupled receptor L4
Database Link:	Entrez Gene 711589 Monkey Entrez Gene 64123 Human Q9HBW9
Background:	The ETL protein receptor has been characterized as an Orphan-B GPCR with an unknown ligand. ETL has a large extracellular domain with epidermal growth factor (EGF)-like repeats, a seven-transmembrane domain, and a short cytoplasmic tail. ETL expression is developmentally regulated in heart.
Protein Families:	Druggable Genome, GPCR, Transmembrane



[View online »](#)

Product images:

ELTD1 antibody staining of Formalin-Fixed, Paraffin-Embedded Human Colon, Smooth Muscle followed by biotinylated Goat anti-Rabbit IgG secondary antibody, alkaline phosphatase-streptavidin and chromogen.