

Product datasheet for **AP22450PU-N**

GOLPH2 (GOLM1) (C-term) Goat Polyclonal Antibody

Product data:

Product Type:	Primary Antibodies
Applications:	ELISA, IHC, WB
Recommended Dilution:	Peptide ELISA: 1/16000 (Detection Limit). Immunohistochemistry on Paraffin Sections: In paraffin embedded Human Prostate shows luminal staining of secretory cells in the glands. Recommended concentration: 3-6 µg/ml. Paraffin embedded Human Uterus and Small Intestine. Recommended concentration: 3.75 µg/ml.
Reactivity:	Human
Host:	Goat
Clonality:	Polyclonal
Immunogen:	Peptide with sequence from the C-Terminus of the protein sequence according to NP_057632.2 and NP_808800.1.
Specificity:	Recognizes Golgi membrane protein 1 / GOLM1 (C-term).
Formulation:	Tris saline, pH~7.3 with 0.02% Sodium Azide and 0.5% BSA State: Aff - Purified State: Liquid purified Ig fraction
Concentration:	lot specific
Purification:	Ammonium Sulphate Precipitation followed by antigen Affinity Chromatography using the immunizing peptide
Conjugation:	Unconjugated
Storage:	Store the antibody undiluted at 2-8°C for one month or (in aliquots) at -20°C for longer. Avoid repeated freezing and thawing.
Stability:	Shelf life: one year from despatch.
Gene Name:	golgi membrane protein 1
Database Link:	Entrez Gene 51280 Human Q8NBJ4



[View online »](#)

Background:

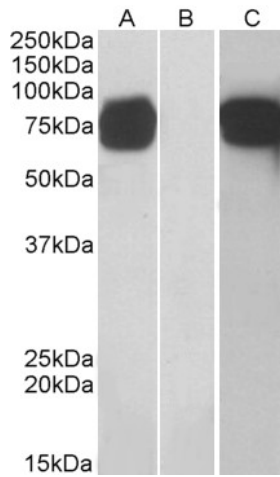
The Golgi complex plays a key role in the sorting and modification of proteins exported from the endoplasmic reticulum. The protein encoded by this gene is a type II Golgi transmembrane protein. It processes protein synthesized in the rough endoplasmic reticulum and assists in the transport of protein cargo through the Golgi apparatus. The expression of this encoded protein has been observed to be upregulated in response to viral infection.

Synonyms:

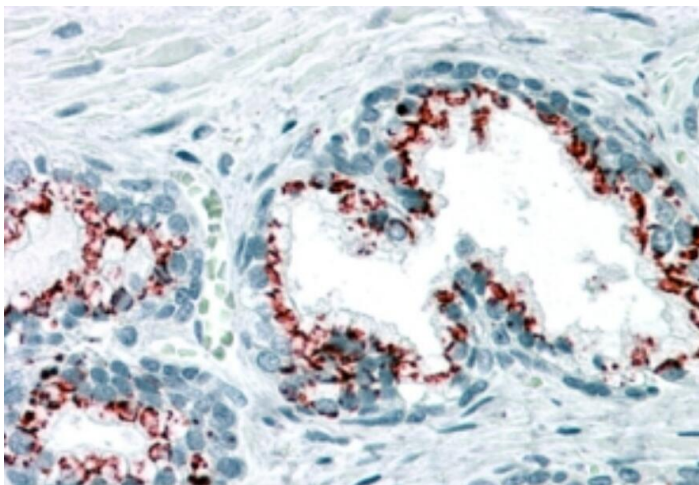
Golgi phosphoprotein 2, Golgi membrane protein GP73,C9orf155, GOLPH2, PSEC0242, Golgi marker

Protein Families:

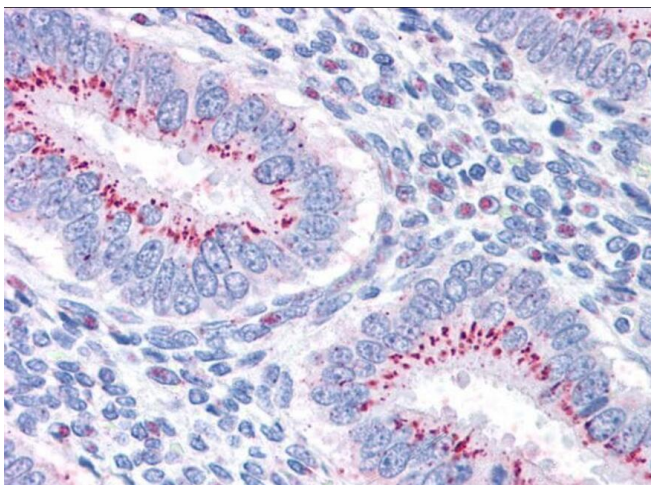
Transmembrane

Product images:


HEK293 lysate (10ug protein in RIPA buffer) overexpressing Human GOLM1 with C-terminal MYC tag probed with AP22450PU-N (1ug/ml) in Lane A and probed with anti-MYC Tag (1/1000) in lane C. Mock-transfected HEK293 probed with AP22450PU-N (1mg/ml) in Lane B. Primary



AP22450PU-N (3.75ug/ml) staining of paraffin embedded Human Prostate. Steamed antigen retrieval with citrate buffer pH 6, AP-staining.



AP22450PU-N (3.75ug/ml) staining of paraffin embedded Human Uterus. Steamed antigen retrieval with citrate buffer pH 6, AP-staining.



AP22450PU-N (3.75ug/ml) staining of paraffin embedded Human Small Intestine. Steamed antigen retrieval with citrate buffer pH 6, AP-staining.