

Product datasheet for **AP22448PU-N**

PTCH1 (C-term) Goat Polyclonal Antibody

Product data:

Product Type:	Primary Antibodies
Applications:	ELISA, IF, IHC
Recommended Dilution:	Peptide ELISA: 1/8000 (Detection Limit). Immunohistochemistry on Paraffin Sections: 3-6 µg/ml. Staining of Embedded Human Colon shows textured nuclear staining of the absorptive cells. Immunofluorescence: 5 µg/ml. Expression of the protein seen in the cytoplasm of HeLa and in the Golgi/membrane of NIH3T3 cells.
Reactivity:	Human, Mouse, Rat
Host:	Goat
Clonality:	Polyclonal
Immunogen:	Peptide with sequence from the C Terminus of Human PTCH1 (NP_001077073.1, NP_001077074.1, NP_001077075.1, NP_001077076.1)
Specificity:	This antibody is expected to recognise all reported isoforms of PTCH1. Variants (NP_001077073.1; NP_001077074.1; NP_001077075.1; NP_001077076.1) encode the same isoform.
Formulation:	Tris saline, pH~7.3 State: Aff - Purified State: Liquid purified Ig fraction Stabilizer: 0.5% BSA Preservative: 0.02% Sodium Azide
Concentration:	lot specific
Purification:	Ammonium Sulphate Precipitation followed by antigen Affinity Chromatography using the immunizing peptide
Conjugation:	Unconjugated
Storage:	Store undiluted at 2-8°C for one month or (in aliquots) at -20°C for longer. Avoid repeated freezing and thawing.
Stability:	Shelf life: one year from despatch.
Gene Name:	patched 1



[View online »](#)

Database Link: [Entrez Gene 19206 Mouse](#)[Entrez Gene 89830 Rat](#)[Entrez Gene 5727 Human](#)
[Q13635](#)

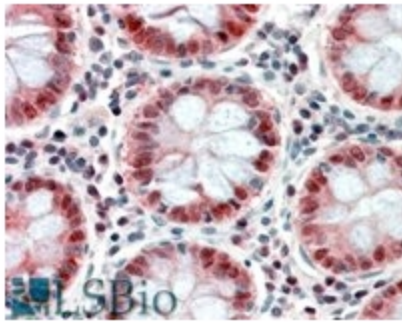
Background: PTCH (Patched protein homolog 1) is a receptor for sonic hedgehog (SHH), indian hedgehog (IHH) and desert hedgehog (DHH). PTCH associates with the smoothed protein (SMO) to transduce the hedgehog's proteins signal. PTCH has a tumor suppressor function, as inactivation of this protein is probably a necessary, if not sufficient step for tumorigenesis. PTCH is expressed in the adult brain, lung, liver, heart, placenta, skeletal muscle, pancreas and kidney. It is also expressed in tumor cells but not in normal skin. During development PTCH is found in all major target tissues of sonic hedgehog, such as the ventral neural tube, somites, and tissues surrounding the zone of polarizing activity of the limb bud. Defects in PTCH are probably the cause of basal cell nevus syndrome also known as Gorlin syndrome or Gorlin-Goltz syndrome.

Synonyms: PTCH, PTC1, PTC, Patched 1

Protein Families: Druggable Genome, ES Cell Differentiation/IPS, Transmembrane

Protein Pathways: Basal cell carcinoma, Hedgehog signaling pathway, Pathways in cancer

Product images:



PTCH1 antibody staining of Paraffin Embedded Human Colon at 3.8 ug/ml. Steamed antigen retrieval with citrate buffer pH 6, AP-staining.