

Product datasheet for **AP22441PU-N**

Isocitrate dehydrogenase (IDH1) (65-77) Goat Polyclonal Antibody

Product data:

Product Type:	Primary Antibodies
Applications:	ELISA, WB
Recommended Dilution:	Peptide ELISA: 1/1000 (Detection Limit). Western blot: 0.1-0.3 µg/ml. Approx 40+45kDa bands observed in lysates of cell line HepG2 and 40kDa in Mouse and Rat Liver lysates. The observed 40kDa is consistent with observaton with different antibodies from other commerical sources.
Reactivity:	Bovine, Canine, Human, Mouse, Rat, Sheep
Host:	Goat
Clonality:	Polyclonal
Immunogen:	Peptide with sequence from the internal region of the protein sequence according to NP_005887.2.
Specificity:	Recognizes IDH1 (65-77).
Formulation:	Tris saline, pH~7.3 with 0.02% Sodium Azide and 0.5% BSA State: Aff - Purified State: Liquid purified Ig fraction
Concentration:	lot specific
Purification:	Ammonium Sulphate Precipitation followed by antigen Affinity Chromatography using the immunizing peptide
Conjugation:	Unconjugated
Storage:	Store the antibody undiluted at 2-8°C for one month or (in aliquots) at -20°C for longer. Avoid repeated freezing and thawing.
Stability:	Shelf life: one year from despatch.
Gene Name:	isocitrate dehydrogenase (NADP(+)) 1, cytosolic
Database Link:	Entrez Gene 3417 Human O75874



[View online »](#)

Background:

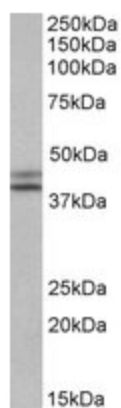
IDH1 belongs to two distinct subclasses. The protein is the NADP(+)-dependent isocitrate dehydrogenase found in the cytoplasm and peroxisomes. This protein contains the PTS-1 peroxisomal targeting signal sequence. The presence of this enzyme in peroxisomes suggests roles in the regeneration of NADPH for intraperoxisomal reductions, such as the conversion of 2, 4-dienoyl-CoAs to 3-enoyl-CoAs, as well as in peroxisomal reactions that consume 2-oxoglutarate, namely the alpha-hydroxylation of phytanic acid. The cytoplasmic enzyme serves a significant role in cytoplasmic NADPH production.

Synonyms:

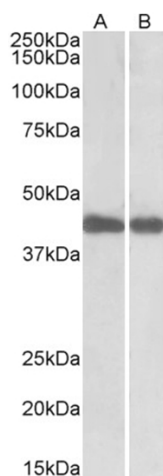
PICD, Cytosolic NADP-isocitrate dehydrogenase, ICDH, IDP, Oxalosuccinate decarboxylase

Note:

Calculated Molecular Weight: 46.7kDa (NP_005887.2).

Product images:


IDH1 antibody staining of HepG2 lysate at 0.1 ug/ml (35ug protein in RIPA buffer). Primary incubation was 1 hour. Detected by chemiluminescence.



IDH1 antibody staining of Mouse (A) and Rat (B) Liver lysates at 0.1 ug/ml (35ug protein in RIPA buffer). Primary incubation was 1 hour. Detected by chemiluminescence.