

Product datasheet for **AP22436PU-N**

NEK7 Goat Polyclonal Antibody

Product data:

Product Type:	Primary Antibodies
Applications:	ELISA, IHC, WB
Recommended Dilution:	Peptide ELISA: Limit Dilution: 1/64000. Western blot: 0.05-0.2 µg/ml. Approx 35kDa band observed in lysates of cell line HeLa. Immunohistochemistry on Paraffin Sections: 3.75 µg/ml
Reactivity:	Bovine, Canine, Human, Mouse, Rat
Host:	Goat
Clonality:	Polyclonal
Immunogen:	Peptide with sequence from the internal region of the protein sequence according to NP_598001.1.
Specificity:	Recognizes NEK7.
Formulation:	Tris saline, pH~7.3 with 0.02% Sodium Azide and 0.5% BSA State: Aff - Purified State: Liquid purified Ig fraction
Concentration:	lot specific
Purification:	Ammonium Sulphate Precipitation followed by antigen Affinity Chromatography using the immunizing peptide
Conjugation:	Unconjugated
Storage:	Store the antibody undiluted at 2-8°C for one month or (in aliquots) at -20°C for longer. Avoid repeated freezing and thawing.
Stability:	Shelf life: one year from despatch.
Gene Name:	NIMA related kinase 7
Database Link:	Entrez Gene 140609 Human Q8TDX7



[View online »](#)

Background:

NEK7 encodes a NEK type protein kinase, which contains a C-terminal NIMA-like catalytic domain.

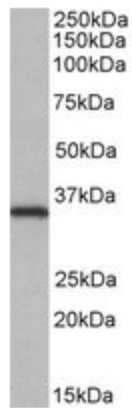
NEK7 expression has been documented in normal human blood, brain, heart, kidney, liver, lung, ovary, prostate, skeletal muscle and testis. ESTs have been isolated from several tissue libraries, including normal adrenal, bone, pancreas and skeletal muscle and cancerous blood, head/neck, ovary and lung.

Synonyms:

NIMA related kinase 7

Note:

Calculated Molecular Weight: 34.6kDa (NP_598001.1).

Product images:

NEK7 antibody staining of HeLa lysate at 0.05 ug/ml (35ug protein in RIPA buffer). Primary incubation was 1 hour. Detected by chemiluminescence.