

Product datasheet for **AP22423PU-N**

ALDH6A1 (262-272) Goat Polyclonal Antibody

Product data:

Product Type:	Primary Antibodies
Applications:	ELISA, WB
Recommended Dilution:	Peptide ELISA: Limit Dilution: 1/32000. Western blot: 0.1-0.3 µg/ml. Approx 55kDa band observed in Human, Mouse and Rat Kidney lysates. Immunohistochemistry on Paraffin Sections: 5 µg/ml in Paraffin embedded Human Liver.
Reactivity:	Bovine, Canine, Human, Mouse, Porcine, Rat
Host:	Goat
Clonality:	Polyclonal
Immunogen:	Peptide with sequence from the internal region of the protein sequence according to NP_005580.1.
Specificity:	Recognizes ALDH6A1 (262-272).
Formulation:	Tris saline, pH~7.3 with 0.02% Sodium Azide and 0.5% BSA State: Aff - Purified State: Liquid purified Ig fraction
Concentration:	lot specific
Purification:	Ammonium Sulphate Precipitation followed by antigen Affinity Chromatography using the immunizing peptide
Conjugation:	Unconjugated
Storage:	Store the antibody undiluted at 2-8°C for one month or (in aliquots) at -20°C for longer. Avoid repeated freezing and thawing.
Stability:	Shelf life: one year from despatch.
Gene Name:	aldehyde dehydrogenase 6 family member A1
Database Link:	Entrez Gene 4329 Human Q02252



[View online »](#)

Background:

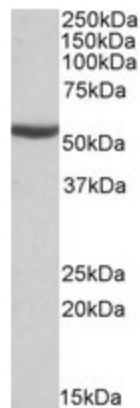
ALDH6A1 belongs to the aldehyde dehydrogenases family of proteins. This enzyme plays a role in the valine and pyrimidine catabolic pathways. This protein is a mitochondrial methylmalonate semialdehyde dehydrogenase, and catalyzes the irreversible oxidative decarboxylation of malonate and methylmalonate semialdehydes to acetyl- and propionyl-CoA. Methylmalonate semialdehyde dehydrogenase deficiency is characterized by elevated beta-alanine, 3-hydroxypropionic acid, and both isomers of 3-amino and 3-hydroxyisobutyric acids in urine organic acids.

Synonyms:

MGC40271; MMSADHA; MMSDH

Note:

Calculated Molecular Weight: 57.8kDa (NP_005580.1).

Product images:

ALDH6A1 antibody staining of Mouse Kidney lysate at 0.1 ug/ml (35ug protein in RIPA buffer). Primary incubation was 1 hour. Detected by chemiluminescence.