

## Product datasheet for **AP22415PU-N**

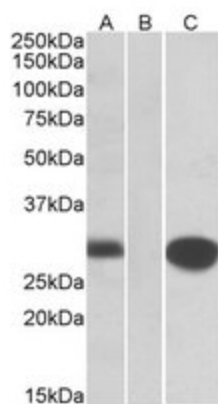
### MID1IP1 Goat Polyclonal Antibody

#### Product data:

Product Type:	Primary Antibodies
Applications:	ELISA, WB
Recommended Dilution:	Peptide ELISA: Limit Dilution: 1/8000. Western blot: 0.2-1.0 µg/ml. In transfected HEK293 transiently expressing full-length Human MID1IP1 (myc and DYKDDDDK tagged), a band of approx. 28kDa was observed. No bands were observed in mock-transfected HEK293 and the same band was observed using anti-myc tag antibody.
Reactivity:	Bovine, Canine, Human, Mouse, Rat
Host:	Goat
Clonality:	Polyclonal
Immunogen:	Peptide with sequence from the internal region of the protein sequence according to NP_067065.1.
Specificity:	Recognizes MIG12
Formulation:	Tris saline, pH~7.3 with 0.02% Sodium Azide and 0.5% BSA State: Aff - Purified State: Liquid purified Ig fraction
Concentration:	lot specific
Purification:	Ammonium Sulphate Precipitation followed by antigen Affinity Chromatography using the immunizing peptide
Conjugation:	Unconjugated
Storage:	Store the antibody undiluted at 2-8°C for one month or (in aliquots) at -20°C for longer. Avoid repeated freezing and thawing.
Stability:	Shelf life: one year from despatch.
Gene Name:	MID1 interacting protein 1
Database Link:	<a href="#">Entrez Gene 58526 Human Q9NPA3</a>
Synonyms:	STRAIT11499, MID1IP1, MIG12



[View online »](#)

**Product images:**

HEK293 lysate (10ug protein in RIPA buffer) overexpressing Human MID1IP1 with C-terminal MYC tag probed with (1 ug/ml) in Lane A and probed with anti-MYC Tag (1/1000) in lane C. Mock-transfected HEK293 probed with (1 mg/ml) in Lane B. Primary incubations were for 1 hour. Detected by chemiluminescence.