

Product datasheet for **AP22390PU-N**

ALDH5A1 (485-496) Goat Polyclonal Antibody

Product data:

Product Type:	Primary Antibodies
Applications:	ELISA, IHC, WB
Recommended Dilution:	Peptide ELISA: 1/32000 (Detection Limit). Western blot: 0.3-1 µg/ml. This antibody detects a band of Approx 55kDa in Human Liver lysates and 50kDa band in Mouse and Rat Liver lysates. Immunohistochemistry on Paraffin Sections: 5-10 µg/ml. In paraffin embedded Human Liver shows heavy textured cytoplasm staining in hepatocytes, consistent with mitochondria.
Reactivity:	Bovine, Canine, Human, Mouse, Rat
Host:	Goat
Clonality:	Polyclonal
Immunogen:	Peptide with sequence from the internal region of Human ALDH5A1.
Specificity:	This antibody is expected to recognize both reported isoforms (NP_733936.1; NP_001071.1).
Formulation:	Tris saline, pH~7.3 State: Aff - Purified State: Liquid purified Ig fraction Stabilizer: 0.5% BSA Preservative: 0.02% Sodium Azide
Concentration:	lot specific
Purification:	Ammonium Sulphate Precipitation followed by antigen Affinity Chromatography using the immunizing peptide
Conjugation:	Unconjugated
Storage:	Store undiluted at 2-8°C for one month or (in aliquots) at -20°C for longer. Avoid repeated freezing and thawing.
Stability:	Shelf life: one year from despatch.
Gene Name:	aldehyde dehydrogenase 5 family member A1
Database Link:	<u>Entrez Gene 214579 Mouse</u> <u>Entrez Gene 291133 Rat</u> <u>Entrez Gene 7915 Human P51649</u>



[View online »](#)

Background: Defects in ALDH5A1 are the cause of succinate semialdehyde dehydrogenase deficiency (SSADH deficiency) [MIM:271980]. SSADH deficiency is a rare inborn error in the metabolism of 4-aminobutyric acid (GABA) which leads to accumulation of 4-hydroxybutyric acid in physiologic fluids of patients. The disease is characterized by severe ataxia and by mildly retarded psychomotor development.

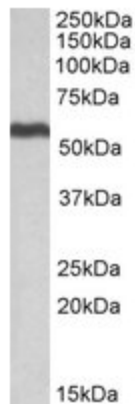
Synonyms: SSADH; SSDH

Note: **Calculated Molecular Weight:** 58.7kDa (NP_733936.1).

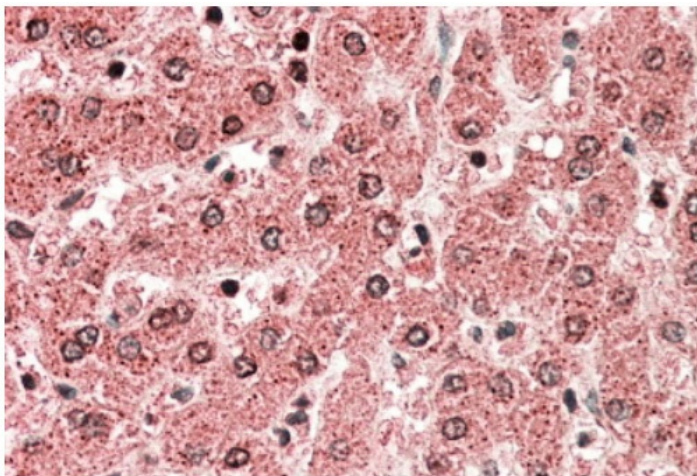
Protein Families: Druggable Genome

Protein Pathways: Alanine, aspartate and glutamate metabolism, Butanoate metabolism, Metabolic pathways

Product images:



ALDH5A1 antibody staining of Human Liver lysate at 0.5 ug/ml (35ug protein in RIPA buffer). Primary incubation was 1 hour. Detected by chemiluminescence.



ALDH5A1 antibody staining of paraffin embedded Human Liver at 5 ug/ml. Steamed antigen retrieval with citrate buffer pH 6, AP-staining.