

Product datasheet for **AP22384PU-N**

SFRP1 (C-term) Goat Polyclonal Antibody

Product data:

Product Type:	Primary Antibodies
Applications:	ELISA, IHC
Recommended Dilution:	Peptide ELISA: 1/1000 (Detection Limit). Immunohistochemistry on Paraffin Sections: 3-6 µg/ml. In paraffin embedded Human Kidney shows vesicular staining in epithelial cells of PCT.
Reactivity:	Bovine, Human, Mouse
Host:	Goat
Clonality:	Polyclonal
Immunogen:	Synthetic peptide corresponding to the C-terminus of Human SFRP1 (NP_003003.3).
Specificity:	Recognizes Secreted Frizzled-related Protein 1 (SFRP1) at C-term.
Formulation:	Tris saline, pH~7.3 State: Aff - Purified State: Liquid purified IgG fraction Stabilizer: 0.5% BSA Preservative: 0.02% Sodium Azide
Concentration:	lot specific
Purification:	Ammonium Sulphate Precipitation followed by Antigen Affinity Chromatography using the immunizing peptide
Conjugation:	Unconjugated
Storage:	Store undiluted at 2-8°C for one month or (in aliquots) at -20°C for longer. Avoid repeated freezing and thawing.
Stability:	Shelf life: one year from despatch.
Gene Name:	secreted frizzled related protein 1
Database Link:	Entrez Gene 6422 Human Q8N474



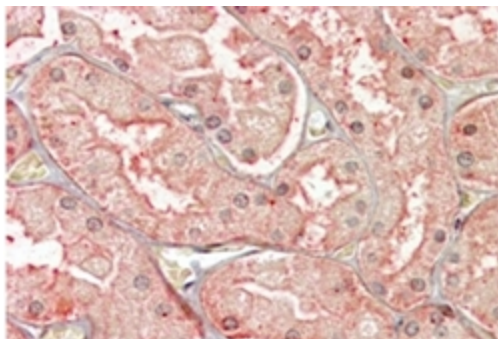
[View online »](#)

Background:

SFRP1 (also known as FRP, FRP1, SARP2, Secreted Apoptosis-related Protein 2, Secreted Frizzled-related Protein and Secreted frizzled-related protein 1) is a member of the SFRP family that contains a cysteine-rich domain homologous to the putative Wnt-binding site of Frizzled proteins. SFRPs act as soluble modulators of Wnt signaling. SFRP1 and SFRP5 may be involved in determining the polarity of photoreceptor cells in the retina. SFRP1 is expressed in several human tissues, with the highest levels in heart.

Synonyms:

SFRP-1, FRP-1, FRP1, FRP, SARP2, SARP-2

Product images:

SFRP1 Antibody staining of Formalin-Fixed, Paraffin-Embedded Human Kidney. Steamed antigen retrieval with citrate buffer pH 6, AP-staining.