

Product datasheet for **AP22383PU-N**

Cytochrome P450 2E1 (CYP2E1) Goat Polyclonal Antibody

Product data:

Product Type:	Primary Antibodies
Applications:	ELISA, IHC, WB
Recommended Dilution:	Peptide ELISA: 1/32000 (Detection Limit). Western blot: 0.05-0.2 µg/ml. Detects a band of ~50kDa in Human Liver lysates. Immunohistochemistry on Paraffin Sections: 3-5 µg/ml. In paraffin embedded Human Liver shows ER-like staining in hepatocytes.
Reactivity:	Human
Host:	Goat
Clonality:	Polyclonal
Immunogen:	Peptide with sequence from the internal region of the protein sequence according to NP_000764.1.
Specificity:	Recognizes Human CYP2E1. Other species not tested.
Formulation:	Tris saline, pH~7.3 State: Aff - Purified State: Liquid purified IgG fraction Stabilizer: 0.5% BSA Preservative: 0.02% Sodium Azide
Concentration:	lot specific
Purification:	Ammonium Sulphate Precipitation followed by Antigen Affinity Chromatography using the immunizing peptide
Conjugation:	Unconjugated
Storage:	Store undiluted at 2-8°C for one month or (in aliquots) at -20°C for longer. Avoid repeated freezing and thawing.
Stability:	Shelf life: one year from despatch.
Gene Name:	cytochrome P450 family 2 subfamily E member 1
Database Link:	Entrez Gene 1571 Human P05181



[View online »](#)

Background:

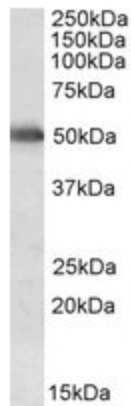
The cytochrome P450 proteins are monooxygenases which catalyze many reactions involved in drug metabolism and biosynthesis. Cytochrome P450 2E1 is induced by ethanol, diabetes and starvation. The enzyme metabolizes both endogenous substrates, such as ethanol, acetone, and acetal, and exogenous substrates including benzene, carbon tetrachloride, ethylene glycol, and nitrosamines. Due to its many substrates, this enzyme may be involved in such varied processes as gluconeogenesis, hepatic cirrhosis, diabetes, and cancer.

Synonyms:

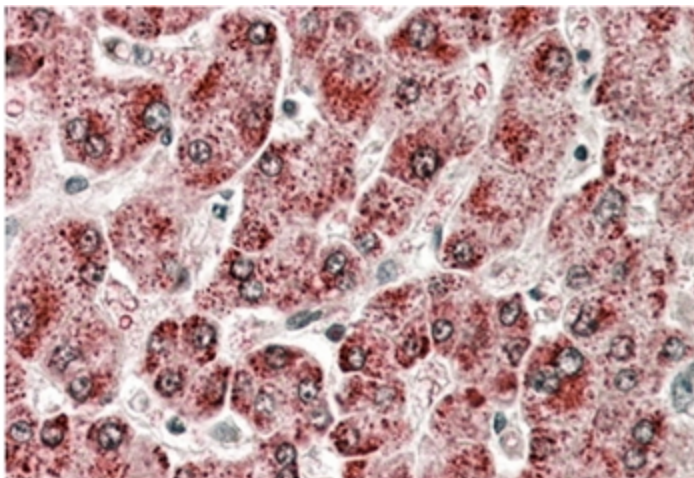
Cytochrome P450 2E1, CYP2E, CYP11E1, Cytochrome P450-J

Note:

Calculated Molecular Weight: 56.8kDa (NP_000764.1).

Product images:


CYP2E1 antibody staining of Human Liver lysate at 0.05ug/ml (35ug protein in RIPA buffer). Primary incubation was 1 hour. Detected by chemiluminescence.



CYP2E1 antibody staining of paraffin embedded Human Liver at 3.8 ug/ml. Steamed antigen retrieval with citrate buffer pH 6, AP-staining.