

Product datasheet for **AP22375PU-N**

FOXC1 Goat Polyclonal Antibody

Product data:

| | |
|-----------------------|--|
| Product Type: | Primary Antibodies |
| Applications: | ELISA, WB |
| Recommended Dilution: | Peptide ELISA: Detection Limit: 1/32000. Western blot: 2-4 µg/ml. Detects a band of ~55 kDa in lysates of cell line HEK293. |
| Reactivity: | Human, Mouse, Porcine |
| Host: | Goat |
| Clonality: | Polyclonal |
| Immunogen: | Dynthetic peptide from an internal region of Human FOXC1 (NP_001444.2). |
| Specificity: | Recognizes FOXC1 (internal). |
| Formulation: | Tris saline, pH 7.3 containing 0.02% Sodium Azide as preservative and 0.5% BSA as stabilizer. State: Aff - Purified State: Liquid purified IgG fraction. |
| Concentration: | lot specific |
| Purification: | Ammonium Sulphate Precipitation followed by Antigen Affinity Chromatography using the immunizing peptide. |
| Conjugation: | Unconjugated |
| Storage: | Store the antibody undiluted at 2-8°C for one month or (in aliquots) at -20°C for longer. Avoid repeated freezing and thawing. |
| Stability: | Shelf life: one year from despatch. |
| Gene Name: | forkhead box C1 |
| Database Link: | Entrez Gene 17300 Mouse Entrez Gene 2296 Human Q12948 |
| Background: | FOXC1 belongs to the forkhead family of transcription factors which is characterized by a distinct DNA-binding forkhead domain. The specific function of this gene has not yet been determined; however, it has been shown to play a role in the regulation of embryonic and ocular development. Mutations in this gene cause various glaucoma phenotypes including primary congenital glaucoma, autosomal dominant iridogoniodysgenesis anomaly, and Axenfeld-Rieger anomaly. |



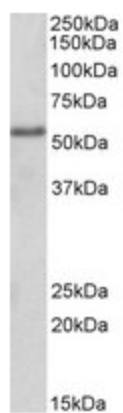
[View online »](#)

Synonyms: Forkhead box protein C1, FREAC-3

Note: Calculated Molecular Weight: 56.8kDa (NP_001444.2).

Protein Families: Druggable Genome, Transcription Factors

Product images:



FOXC1 antibody staining of HEK293 lysate at 2ug/ml (35ug protein in RIPA buffer). Primary incubation was 1 hour. Detected by chemiluminescence.