

Product datasheet for **AP22374PU-N**

Plexin D1 (PLXND1) Goat Polyclonal Antibody

Product data:

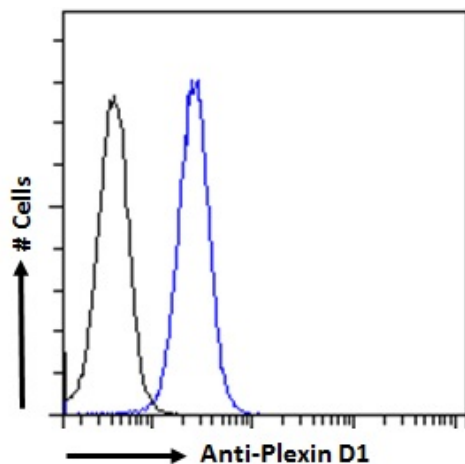
Product Type:	Primary Antibodies
Applications:	ELISA, FC, IHC, WB
Recommended Dilution:	Peptide ELISA: 1/128000 (Detection Limit). Western blot: 0.5 µg/ml. Detects a 250kDa band in Human Arterial endothelial cells lysates (Reported by a customer). Immunohistochemistry on Paraffin Sections: A customer reported specific stain in Paraffin-embedded Mouse Brain after epitope retrieval in Citrate buffer pH6. Flow Cytometry analysis of K562 cells: 10 µg/ml.
Reactivity:	Bovine, Canine, Human, Porcine
Host:	Goat
Clonality:	Polyclonal
Immunogen:	Peptide with sequence C-LAEPKKSHRQSH, from the internal region of the protein sequence according to NP_055918.2.
Specificity:	Recognizes Plexin D1.
Formulation:	Tris saline, pH 7.3 containing 0.02% Sodium Azide as preservative and 0.5% BSA as stabilizer. State: Aff - Purified State: Liquid purified IgG fraction.
Concentration:	lot specific
Purification:	Ammonium Sulphate Precipitation followed by Antigen Affinity Chromatography using the immunizing peptide.
Conjugation:	Unconjugated
Storage:	Store the antibody undiluted at 2-8°C for one month or (in aliquots) at -20°C for longer. Avoid repeated freezing and thawing.
Stability:	Shelf life: one year from despatch.
Gene Name:	plexin D1
Database Link:	Entrez Gene 23129 Human Q9Y4D7
Synonyms:	Plexin-D1, Plexin D1, KIAA0620



[View online »](#)

Protein Families: Druggable Genome, Transmembrane

Product images:



Flow cytometric analysis of paraformaldehyde fixed K562 cells (blue line), permeabilized with 0.5% Triton. Primary incubation 1hr (10ug/ml) followed by Alexa Fluor 488 secondary antibody (2ug/ml). IgG control: Unimmunized goat IgG (black line) followed by Alexa Fluor 488 secondary antibody.