

Product datasheet for **AP22371PU-N**

SUV39H2 (C-term) Goat Polyclonal Antibody

Product data:

Product Type:	Primary Antibodies
Applications:	ELISA, WB
Recommended Dilution:	Peptide ELISA: 1/8000 (Detection Limit). Western blot: 1-3 µg/ml. Approx 38kDa band observed in Rat Kidney and Testis lysates (calculated MW of 39.9kDa according to NP_078946.1). Primary incubation was 1 hour. Preliminary testing was unsuccessful on Mouse, Human and Pig Testis and HEK293 cell line for this particular batch.
Reactivity:	Bovine, Canine, Human, Mouse, Porcine, Rat
Host:	Goat
Clonality:	Polyclonal
Immunogen:	Synthetic peptide corresponding to the C-Terminus of Human SUV39H2 (NP_078946.1).
Specificity:	Recognizes SUV39H2 / KMT1B.
Formulation:	Tris saline, pH~7.3 State: Aff - Purified State: Liquid purified IgG fraction Stabilizer: 0.5% BSA Preservative: 0.02% Sodium Azide
Concentration:	lot specific
Purification:	Ammonium Sulphate Precipitation followed by Antigen Affinity Chromatography using the immunizing peptide
Conjugation:	Unconjugated
Storage:	Store undiluted at 2-8°C for one month or (in aliquots) at -20°C for longer. Avoid repeated freezing and thawing.
Stability:	Shelf life: one year from despatch.
Gene Name:	suppressor of variegation 3-9 homolog 2
Database Link:	Entrez Gene 79723 Human Q9H5I1

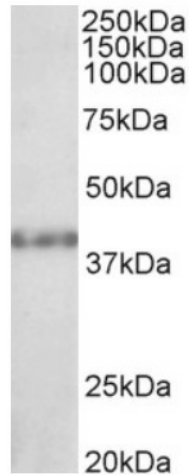


[View online »](#)

Background: KMT1B / Suppressor of variegation 3-9 homolog 2 is a histone lysine N-methyltransferase activity (H3-K9 specific). This protein contains a SET domain (HMTase activity) and binds chromatin.

Synonyms: Lysine N-methyltransferase 1B

Product images:



(1ug/ml) staining of Rat Kidney lysate (35ug protein in RIPA buffer). Primary incubation was 1 hour. Detected by chemiluminescence.