

Product datasheet for **AP21519PU-N**

SynCAM (CADM1) Goat Polyclonal Antibody

Product data:

| | |
|-----------------------|---|
| Product Type: | Primary Antibodies |
| Applications: | ELISA, WB |
| Recommended Dilution: | Peptide ELISA: 1/16000 (Detection limit). Western blot: 0.1-0.3 µg/ml. Approx 42kDa band observed in Mouse Heart lysates (Calculated MW of 45.8kDa according to Mouse NP_001020771.1). |
| Reactivity: | Bovine, Canine, Human, Mouse, Rat |
| Host: | Goat |
| Clonality: | Polyclonal |
| Immunogen: | Peptide with sequence from the internal region of the protein sequence according to NP_055148.3; NP_001091987.1. |
| Specificity: | This antibody is expected to recognize both reported isoforms (NP_055148.3 and NP_001091987.1). |
| Formulation: | Tris saline, pH 7.3 containing 0.02% Sodium Azide as preservative and 0.5% BSA as stabilizer. State: Aff - Purified State: Liquid purified Ig fraction. |
| Concentration: | lot specific |
| Purification: | Ammonium Sulphate Precipitation followed by Antigen Affinity Chromatography using the immunizing peptide. |
| Conjugation: | Unconjugated |
| Storage: | Store the antibody undiluted at 2-8°C for one month or (in aliquots) at -20°C for longer. Avoid repeated freezing and thawing. |
| Stability: | Shelf life: one year from despatch. |
| Gene Name: | Homo sapiens cell adhesion molecule 1 (CADM1), transcript variant 2 |
| Database Link: | Entrez Gene 54725 Mouse Entrez Gene 363058 Rat Entrez Gene 23705 Human Q9BY67 |



[View online »](#)

Background:

Cell Adhesion Molecules (CAMs) are proteins located on the cell surface involved with binding with other cells or with the extracellular matrix. SynCAM belongs to immunoglobulin superfamily 4 and is involved in cell-cell adhesion. Loss of SynCAM is common in a number of cancers including lung, breast, prostate and meningioma. This loss of SynCAM in advanced stage cancers suggests a role in tumor invasion and/or metastasis. Also recent studies have shown that SynCAM suppresses induction of EMT (epithelial mesenchymal transition) via regulation of Rho GTPases.

Synonyms:

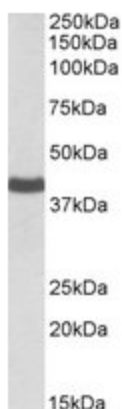
IGSF4, IGSF4A, NECL2, TSLC1, NECL-2, SgIgSF, TSLC-1

Protein Families:

Transmembrane

Protein Pathways:

Cell adhesion molecules (CAMs)

Product images:


CADM1 Antibody staining of Mouse Heart lysate at 0.1 ug/ml (35ug protein in RIPA buffer). Primary incubation was 1 hour. Detected by chemiluminescence.