

## Product datasheet for **AP21518PU-N**

### Proteasome 20S beta 7 (PSMB7) Goat Polyclonal Antibody

#### Product data:

|                       |   |
|-----------------------|---|
| Product Type:         | Primary Antibodies  |
| Applications:         | ELISA, WB   |
| Recommended Dilution: | Peptide ELISA: Detection limit: 1/32000.<br>Western blot: 0.3-1 µg/ml. Approx 40kDa band observed in lysates of cell lines HEK 293, HeLa and Jurkat and of Mouse Fetal Brain (calculated MW of 30.0kDa according to NP_002790.1). |
| Reactivity:           | Bovine, Human, Mouse, Porcine, Rat  |
| Host:                 | Goat  |
| Clonality:            | Polyclonal  |
| Immunogen:            | Peptide with sequence from the internal region of the protein sequence according to NP_002790.1.  |
| Specificity:          | Recognizes PSMB7.   |
| Formulation:          | Tris saline, pH 7.3 containing 0.02% Sodium Azide as preservative and 0.5% BSA as stabilizer.<br>State: Aff - Purified<br>State: Liquid purified Ig fraction.   |
| Concentration:        | lot specific  |
| Purification:         | Ammonium Sulphate Precipitation followed by Antigen Affinity Chromatography using the immunizing peptide.   |
| Conjugation:          | Unconjugated  |
| Storage:              | Store the antibody undiluted at 2-8°C for one month or (in aliquots) at -20°C for longer.<br>Avoid repeated freezing and thawing.   |
| Stability:            | Shelf life: one year from despatch.   |
| Gene Name:            | proteasome subunit beta 7   |
| Database Link:        | <a href="#">Entrez Gene 5695 Human Q99436</a>   |



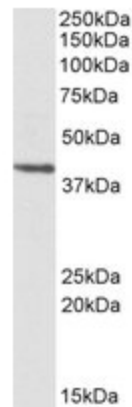
[View online »](#)

**Background:**

The proteasome is a multicatalytic proteinase complex with a highly ordered ring-shaped 20S core structure. The core structure is composed of 4 rings of 28 non-identical subunits; 2 rings are composed of 7 alpha subunits and 2 rings are composed of 7 beta subunits. Proteasomes are distributed throughout eukaryotic cells at a high concentration and cleave peptides in an ATP/ubiquitin-dependent process in a non-lysosomal pathway. An essential function of a modified proteasome, the immunoproteasome, is the processing of class I MHC peptides. This gene encodes a member of the proteasome B-type family, also known as the T1B family, that is a 20S core beta subunit in the proteasome. Expression of this catalytic subunit is downregulated by gamma interferon and proteolytic processing is required to generate a mature subunit. This subunit is not present in the immunoproteasome and is replaced by catalytic subunit 2i (proteasome beta 10 subunit).

**Synonyms:**

Proteasome subunit beta type-7, Proteasome 20S beta 7, Macropain chain Z, Proteasome subunit Z

**Product images:**

PSMB7 antibody staining of HEK293 lysate at 0.3 ug/ml (35 ug protein in RIPA buffer). Primary incubation was 1 hour. Detected by chemiluminescence.