

## Product datasheet for **AP21459SU-N**

### Complement C3 (C3) Goat Polyclonal Antibody

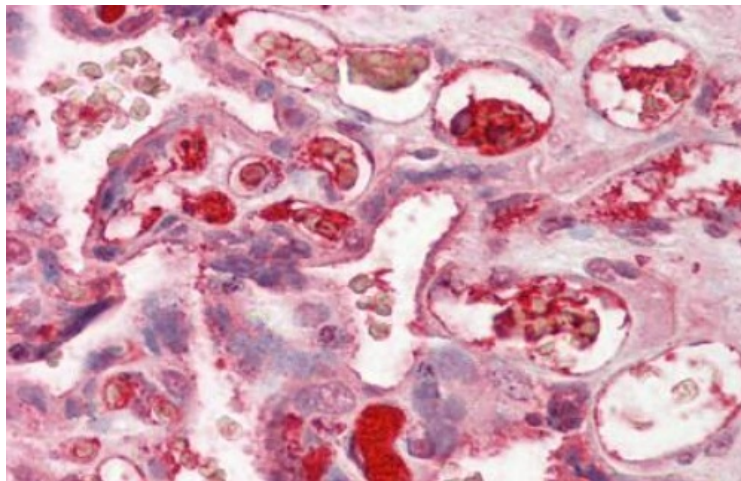
#### Product data:

Product Type:	Primary Antibodies
Applications:	ID, IHC, IP
Recommended Dilution:	Suitable for use in precipitating techniques as Immunelectrophoresis and single and Double Radial Immunodiffusion (Mancini, Ouchterlony) to identify the presence of complement C3c or to determine its concentration. The presence of non-precipitating antibodies has not been assayed. This does not exclude the use of the antiserum in non-precipitating antibody-binding techniques if proper controls are included. Determinations of individual complement components can be very useful in defining the exact location of a defect. Alos suitable for Immunohistochemistry on Paraffin Sections. <i>Recommended Dilutions:</i> <b>Immunelectrophoresis:</b> Use 2 µl human plasma or equivalent against 120 µl antiserum. <b>Double Radial Immunodiffusion:</b> Use a rosette arrangement with 10 µl antiserum in 3 mm diameter center well and 2 µl plasma samples (neat and serially diluted) in 2 mm diameter peripheral wells. <b>Single Radial Immunodiffusion:</b> Use 1 % antiserum in the gel. <b>Immunohistochemistry on Paraffin Sections:</b> 1/200. <i>Antibody Titre:</i> Precipitin titre 1/32 when tested against in agar-block immunodiffusion titration.
Reactivity:	Human
Host:	Goat
Clonality:	Polyclonal
Immunogen:	The protein is isolated and purified from pooled normal human serum by precipitation techniques, followed by chromatographical methods. Freund's complete adjuvant is used in the first step of the immunization.

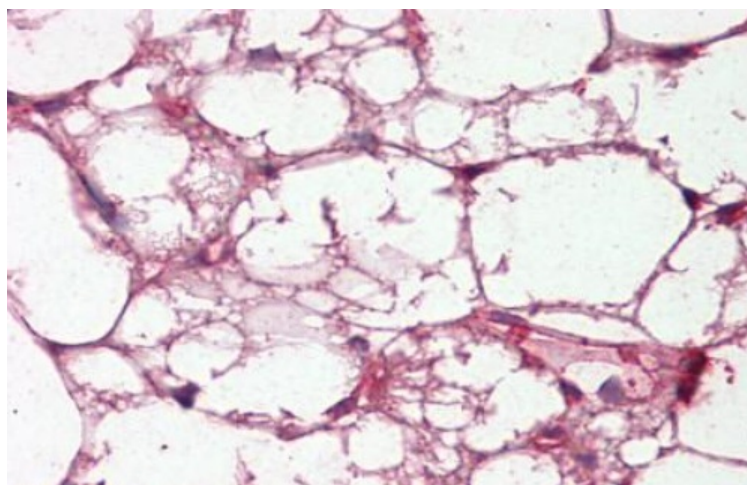


[View online »](#)

<b>Specificity:</b>	In Immunoelectrophoresis against fresh Human serum, a single precipitin line is obtained in the beta-1 region representing native C3. Against serum containing partly activated C3, a precipitin line is obtained which extends from the beta-1 into the alpha-2 region, demonstrating a gradient. In old serum containing totally activated C3 a single precipitin line in the alpha-2 region is obtained. Antisera to C3c can also react with the fragments C3b, C3bi and smaller fragments, since they all carry antigenic determinants of the C3c domain. The product does not react with any other proteins component of human serum or plasma. Inter-species cross-reactivity is a normal feature of antibodies to plasma proteins since they frequently share antigenic determinants. Cross-reactivity of this antiserum has not been tested in detail.
<b>Formulation:</b>	State: Serum State: Lyophilized, Delipidated, Heat inactivated, Stable Whole Serum without preservatives
<b>Reconstitution Method:</b>	Restore by adding 1 ml of sterile distilled water.
<b>Concentration:</b>	Total protein and IgG concentrations in the antiserum are comparable to those of normal goat serum. No foreign proteins added.
<b>Conjugation:</b>	Unconjugated
<b>Storage:</b>	Prior to reconstitution store at 2-8°C. Following reconstitution store undiluted at 2-8°C for one month or (in aliquots) at -20°C for longer. Avoid repeated freezing and thawing.
<b>Stability:</b>	Shelf life: one year from despatch.
<b>Gene Name:</b>	complement component 3
<b>Database Link:</b>	<a href="#">Entrez Gene 718 Human P01024</a>
<b>Background:</b>	C3c is the major fragment resulting from the C3 cleavage by C3 convertase and factor i. It is composed of an intact beta chain bound to two fragments of the alpha chain.
<b>Synonyms:</b>	CPAMD1, Complement component 3
<b>Note:</b>	<b>Adsorption:</b> Immunoaffinity adsorbed using insolubilized antigens as required, to eliminate antibodies reacting with other dog serum proteins. The use of insolubilized adsorption antigens prevents the presence of excess adsorbent protein or immune complexes in the antiserum.
<b>Protein Families:</b>	Druggable Genome
<b>Protein Pathways:</b>	Complement and coagulation cascades, Systemic lupus erythematosus

**Product images:**

Formalin-Fixed, Paraffin-Embedded Human Placenta tissue stained with Complement C3c Antibody Cat.-No AP21459SU-N at 1/200 dilution after heat-induced antigen retrieval.



Formalin-Fixed, Paraffin-Embedded Human Adrenal, Adipocytes stained with Complement C3c Antibody Cat.-No AP21459SU-N at 1/200 dilution after heat-induced antigen retrieval.