

Product datasheet for **AP21362PU-N**

anoctamin 5 (ANO5) (C-term) Rabbit Polyclonal Antibody

Product data:

Product Type:	Primary Antibodies
Applications:	WB
Recommended Dilution:	ELISA: 1/1,000. Western blotting: 1/100-1/500.
Reactivity:	Human, Mouse
Host:	Rabbit
Isotype:	Ig
Clonality:	Polyclonal
Immunogen:	Synthetic peptide -KLH conjugated between 798~828 amino acids from the C-terminal region of Human ANO5.
Specificity:	Recognizes ANO5 (C-term).
Formulation:	PBS with 0.09% (W/V) Sodium Azide as preservative State: Purified State: Liquid purified Ig fraction
Concentration:	lot specific
Purification:	Protein A Chromatography followed by peptide affinity purification
Conjugation:	Unconjugated
Storage:	Store the antibody undiluted at 2-8°C for one month or (in aliquots) at -20°C for longer. Avoid repeated freezing and thawing.
Stability:	Shelf life: one year from despatch.
Gene Name:	anoctamin 5
Database Link:	Entrez Gene 233246 Mouse Entrez Gene 203859 Human Q75V66



[View online »](#)

Background:

ANO5 is a member of the anoctamin family of transmembrane proteins. This protein is likely a calcium activated chloride channel. Defects in ANO5 are the cause of gnathodiaphyseal dysplasia (GDD), also known as osteogenesis imperfecta with unusual skeletal lesions or gnathodiaphyseal sclerosis. GDD is a rare skeletal syndrome characterized by bone fragility, sclerosis of tubular bones, and cemento-osseous lesions of the jawbone. Patients experience frequent bone fractures caused by trivial accidents in childhood; however the fractures heal normally without bone deformity. The jaw lesions replace the tooth-bearing segments of the maxilla and mandible with fibrous connective tissues, including various amounts of cementum-like calcified mass, sometimes causing facial deformities. Patients also have a propensity for jaw infection and often suffer from purulent osteomyelitis-like symptoms, such as swelling of and pus discharge from the gums, mobility of the teeth, insufficient healing after tooth extraction and exposure of the lesions into the oral cavity.

Synonyms:

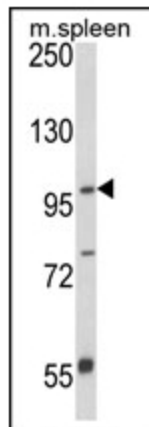
GDD1, TMEM16E, Gnathodiaphyseal dysplasia 1 protein, Transmembrane protein 16E

Note:

Calculated Molecular Weight: 107188 Da

Protein Families:

Transmembrane

Product images:

Western blot analysis of ANO5 Antibody (C-term) in Mouse spleen tissue lysates (35 ug/lane). ANO5 (arrow) was detected using the purified Pab.