

## Product datasheet for **AP21303PU-N**

### Heme Oxygenase 1 (HMOX1) Rabbit Polyclonal Antibody

#### Product data:

Product Type:	Primary Antibodies
Applications:	IHC, IP, WB
Recommended Dilution:	<b>Immunohistochemistry on Paraffin Sections:</b> 10 µg/ml. <b>Immunoprecipitation:</b> 1/100. <b>Western Blot:</b> 1/1000.
Reactivity:	Canine, Hamster, Human, Monkey, Mouse, Rabbit, Rat
Host:	Rabbit
Isotype:	IgG
Clonality:	Polyclonal
Immunogen:	Synthetic peptide derived from sequence near the amino terminus of Human HO-1 (Hsp32)
Specificity:	This antibody recognizes Heme Oxygenase 1 (HMOX1)
Formulation:	PBS containing 0.09% Sodium Azide and 50% Glycerol State: Aff - Purified State: Liquid purified Ig fraction
Concentration:	lot specific
Purification:	Affinity Chromatography on Protein A
Conjugation:	Unconjugated
Storage:	Store the antibody undiluted at 2-8°C for one month or (in aliquots) at -20°C for longer. Avoid repeated freezing and thawing.
Stability:	Shelf life: one year from despatch.
Gene Name:	heme oxygenase 1
Database Link:	<a href="#">Entrez Gene 15368 Mouse</a> <a href="#">Entrez Gene 24451 Rat</a> <a href="#">Entrez Gene 3162 Human</a> <a href="#">P09601</a>



[View online »](#)

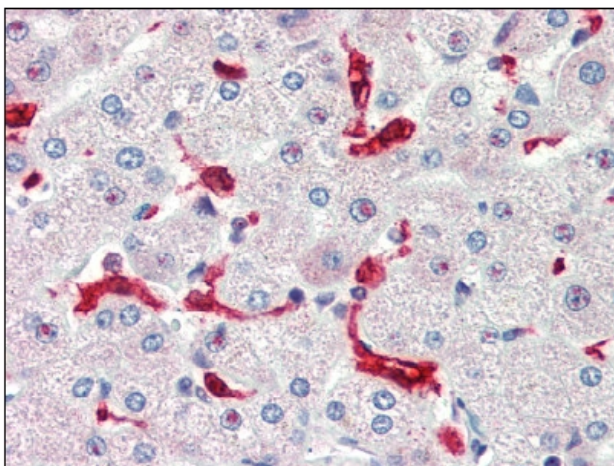
**Background:** Heme oxygenase, an essential enzyme in heme catabolism, cleaves heme to form biliverdin, which is subsequently converted to bilirubin by biliverdin reductase, and carbon monoxide, a putative neurotransmitter. Heme oxygenase activity is induced by its substrate heme and by various nonheme substances. Heme oxygenase occurs as 2 isozymes, an inducible heme oxygenase-1 and a constitutive heme oxygenase-2. HMOX1 and HMOX2 belong to the heme oxygenase family.

**Synonyms:** HO-1, HO, HO1

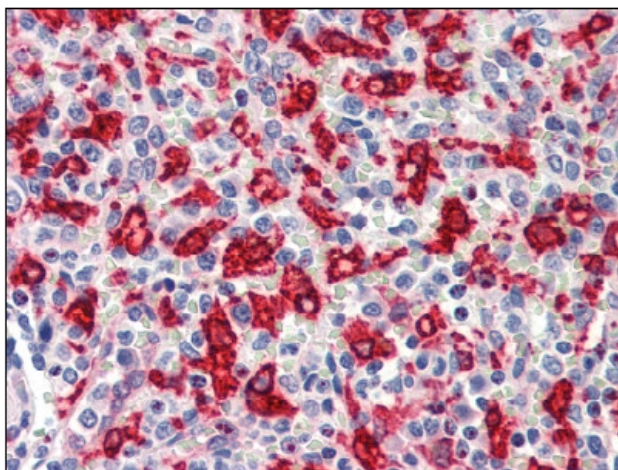
**Protein Families:** Druggable Genome, Transmembrane

**Protein Pathways:** Porphyrin and chlorophyll metabolism

### Product images:



Immunohistochemistry: HMOX1 Antibody staining of Formalin-Fixed, Paraffin-Embedded Human Liver at 10 ug/ml followed by biotinylated Goat anti-Rabbit IgG secondary antibody, alkaline phosphatase-streptavidin and chromogen.



Immunohistochemistry: HMOX1 Antibody staining of Formalin-Fixed, Spleen at 10 ug/ml followed by biotinylated Goat anti-Rabbit IgG secondary antibody, alkaline phosphatase-streptavidin and chromogen.