

## Product datasheet for **AP21301PU-N**

### PSMA4 Goat Polyclonal Antibody

#### Product data:

Product Type:	Primary Antibodies
Applications:	ELISA, WB
Recommended Dilution:	<b>Peptide ELISA:</b> 1/4000 (Detection Limit). <b>Western blot:</b> 0.3-1 µg/ml. This antibody detects a band of ~28kDa in lysates of cell line K562, NIH3T3 and in lysates of Human Tonsil, Human Peripheral Blood Mononucleocytes and in Mouse and Rat Spleen.
Reactivity:	Canine, Human, Mouse, Rat
Host:	Goat
Clonality:	Polyclonal
Immunogen:	Peptide with sequence from the internal region of the protein sequence according to NP_002780.1 and NP_001096138.1
Specificity:	This antibody is expected to recognize both reported isoforms (NP_002780.1 and NP_001096138.1).
Formulation:	Tris saline, pH~7.3 State: Aff - Purified State: Liquid purified IgG fraction Stabilizer: 0.5% BSA Preservative: 0.02% Sodium Azide
Concentration:	lot specific
Purification:	Ammonium Sulphate Precipitation followed by Antigen Affinity Chromatography using the immunizing peptide
Conjugation:	Unconjugated
Storage:	Store undiluted at 2-8°C for one month or (in aliquots) at -20°C for longer. Avoid repeated freezing and thawing.
Stability:	Shelf life: one year from despatch.
Gene Name:	proteasome subunit alpha 4
Database Link:	<a href="#">Entrez Gene 26441 Mouse</a> <a href="#">Entrez Gene 29671 Rat</a> <a href="#">Entrez Gene 5685 Human P25789</a>



[View online »](#)

**Background:**

The proteasome is a multicatalytic proteinase complex with a highly ordered ring-shaped 20S core structure. The core structure is composed of 4 rings of 28 non-identical subunits; 2 rings are composed of 7 alpha subunits and 2 rings are composed of 7 beta subunits. Proteasomes are distributed throughout eukaryotic cells at a high concentration and cleave peptides in an ATP/ubiquitin-dependent process in a non-lysosomal pathway. An essential function of a modified proteasome, the immunoproteasome, is the processing of class I MHC peptides. PSMA4 is a member of the peptidase T1A family, that is a 20S core alpha subunit. Three alternatively spliced transcript variants encoding different isoforms have been found for this gene.

**Synonyms:**

Proteasome subunit alpha type-4, Macropain subunit C9, Proteasome component C9, HC9, PSC9, Proteasome subunit L

**Note:**

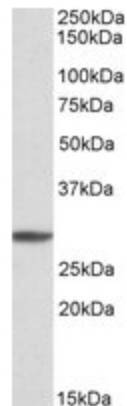
**Calculated Molecular Weight:** 29.5kDa (NP\_002780.1)

**Protein Families:**

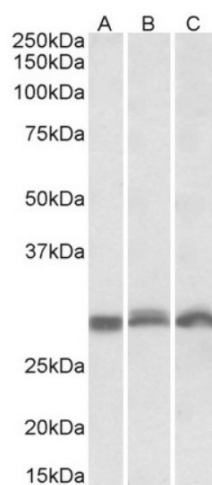
Druggable Genome, Protease

**Protein Pathways:**

Proteasome

**Product images:**

PSMA4 antibody staining of K562 cell lysate at 1ug/ml (35ug protein in RIPA buffer). Primary incubation was 1 hour. Detected by chemiluminescence.



PSMA4 antibody staining of NIH3T3 (A), Mouse Spleen (B), Rat Spleen (C) lysates at 0.3 ug/ml (35ug protein in RIPA buffer). Primary incubation was 1 hour. Detected by chemiluminescence.