

## Product datasheet for **AP21285PU-N**

### ETFA (C-term) Goat Polyclonal Antibody

#### Product data:

Product Type:	Primary Antibodies
Applications:	ELISA, WB
Recommended Dilution:	<b>Peptide ELISA:</b> Limit Dilution: 1/8000. <b>Western blot:</b> 0.05-0.2 µg/ml. This antibody detects a band of ~30kDa in Human, Mouse and Rat Heart lysates.
Reactivity:	Bovine, Canine, Human, Mouse, Rat
Host:	Goat
Clonality:	Polyclonal
Immunogen:	Peptide with sequence from the C Terminus of the protein sequence according to NP_000117.1 and NP_001121188.1.
Specificity:	This antibody is expected to recognize both reported isoforms (NP_000117.1 and NP_001121188.1).
Formulation:	Tris saline, pH 7.3 containing 0.02% Sodium Azide as preservative and 0.5% BSA as stabilizer. State: Aff - Purified State: Liquid purified Ig fraction.
Concentration:	lot specific
Purification:	Ammonium Sulphate Precipitation followed by Antigen Affinity Chromatography using the immunizing peptide.
Conjugation:	Unconjugated
Storage:	Store the antibody undiluted at 2-8°C for one month or (in aliquots) at -20°C for longer. Avoid repeated freezing and thawing.
Stability:	Shelf life: one year from despatch.
Gene Name:	electron transfer flavoprotein alpha subunit
Database Link:	<a href="#">Entrez Gene 110842 Mouse</a> <a href="#">Entrez Gene 300726 Rat</a> <a href="#">Entrez Gene 2108 Human P13804</a>



[View online »](#)

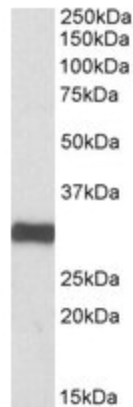
**Background:** ETFFA participates in catalyzing the initial step of the mitochondrial fatty acid beta-oxidation. It shuttles electrons between primary flavoprotein dehydrogenases and the membrane-bound electron transfer flavoprotein ubiquinone oxidoreductase. Defects in electron-transfer-flavoprotein have been implicated in type II glutaricaciduria in which multiple acyl-CoA dehydrogenase deficiencies result in large excretion of glutaric, lactic, ethylmalonic, butyric, isobutyric, 2-methyl-butyrac, and isovaleric acids. Two transcript variants encoding different isoforms have been found for this gene.

**Synonyms:** Alpha-ETF

**Note:** Calculated Molecular Weight: 30.0kDa (NP\_001121188.1).

**Protein Families:** Druggable Genome

### Product images:



ETFFA antibody staining of Human Heart lysate at 0.1 ug/ml (35ug protein in RIPA buffer). Primary incubation was 1 hour. Detected by chemiluminescence.