

Product datasheet for **AP21283PU-N**

ETFB (152-165) Goat Polyclonal Antibody

Product data:

Product Type:	Primary Antibodies
Applications:	ELISA, IHC, WB
Recommended Dilution:	Peptide ELISA: 1/8000 (Detection Limit). Western blot: 1-3 µg/ml. This antibody detects a band of ~27kDa in Human, Mouse and Rat Liver lysates. Immunohistochemistry on Paraffin Sections: 3-5 µg/ml. In paraffin embedded Human Liver shows mitochondrial staining in hepatocytes.
Reactivity:	Bovine, Canine, Human, Mouse, Rat
Host:	Goat
Clonality:	Polyclonal
Immunogen:	Peptide with sequence from the internal region (aa 152-165) of the protein sequence according to NP_001976.1 and NP_001014763.1.
Specificity:	This antibody is expected to recognize both reported isoforms (NP_001976.1 and NP_001014763.1).
Formulation:	Tris saline, pH 7.3 containing 0.02% Sodium Azide as preservative and 0.5% BSA as stabilizer. State: Aff - Purified State: Liquid purified Ig fraction.
Concentration:	lot specific
Purification:	Ammonium Sulphate Precipitation followed by Antigen Affinity Chromatography using the immunizing peptide.
Conjugation:	Unconjugated
Storage:	Store the antibody undiluted at 2-8°C for one month or (in aliquots) at -20°C for longer. Avoid repeated freezing and thawing.
Stability:	Shelf life: one year from despatch.
Gene Name:	electron transfer flavoprotein beta subunit
Database Link:	Entrez Gene 110826 Mouse Entrez Gene 292845 Rat Entrez Gene 2109 Human P38117



[View online »](#)

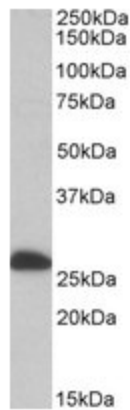
Background: ETFB is a is an electron-transfer-flavoprotein, (beta polypeptide), and a subcomponent of Electron transfer flavoprotein (ETF). ETF exists in the mitochondrial matrix as a heterodimer of 30-kD alpha subunits (ETFA) and 28-kD beta subunits (ETFB) and contains 1 flavin adenine dinucleotide (FAD) and 1 adenosine 5-prime monophosphate (AMP) per heterodimer. This electron transfer flavoprotein serves as a specific electron acceptor for several dehydrogenases and transfers the electrons to the main mitochondrial respiratory chain via ETF-ubiquinone oxidoreductase (ETF dehydrogenase).

Synonyms: Beta-ETF

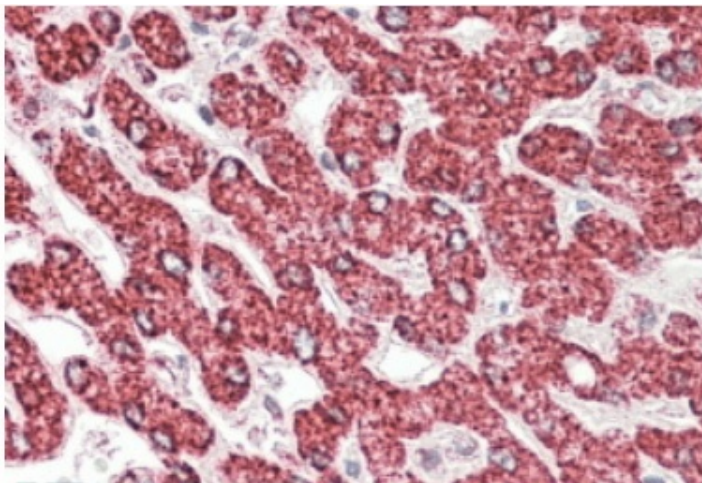
Note: Calculated Molecular Weight: 27.8kDa (NP_001976.1).

Protein Families: Druggable Genome

Product images:



ETFB antibody staining of Human Liver lysate at 0.1 ug/ml (35ug protein in RIPA buffer). Primary incubation was 1 hour. Detected by chemiluminescence.



ETFB antibody staining paraffin embedded Human Liver at 3.8 ug/ml. Steamed antigen retrieval with citrate buffer pH 6, AP-staining.