

Product datasheet for **AP21204PU-M**

NMU Rabbit Polyclonal Antibody

Product data:

Product Type:	Primary Antibodies
Applications:	IHC, WB
Recommended Dilution:	Western blot: 1/500 - 1/1000. Immunohistochemistry on paraffin sections: 1:50 - 1:200.
Reactivity:	Human
Host:	Rabbit
Clonality:	Polyclonal
Specificity:	This antibody detects endogenous levels of Neuromedin-U protein. (region surrounding Ile174)
Formulation:	Phosphate buffered saline (PBS), pH 7.2 State: Aff - Purified State: Liquid purified Ig fraction Preservative: 0.05% sodium azide
Concentration:	1.0 mg/ml
Purification:	Affinity chromatography using epitope-specific immunogen (> 95% pure by SDS-PAGE)
Conjugation:	Unconjugated
Storage:	Store undiluted at 2-8°C for one month or (in aliquots) at -20°C for longer. Avoid repeated freezing and thawing.
Stability:	Shelf life: one year from despatch.
Predicted Protein Size:	~ 22 kDa
Gene Name:	neuromedin U
Database Link:	Entrez Gene 10874 Human P48645
Background:	Neuromedin U (NmU) is a vertebrate peptide which stimulates uterine smooth muscle contraction and causes selective vasoconstriction. Like most other active peptides, it is proteolytically processed from a larger precursor protein. The mature peptides are 8 (NmU-8) to 25 (NmU-25) residues long and C-terminally amidated. The sequence of the C-terminal extremity of NmU is extremely well conserved across species.

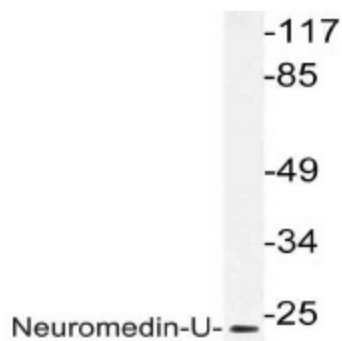


[View online »](#)

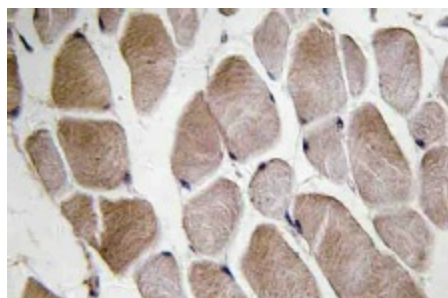
Synonyms: Neuromedin U

Protein Families: Druggable Genome, Secreted Protein, Transmembrane

Product images:



Western blot (WB) analysis of Neuromedin-U in extracts from HepG2 cells with [AP21204PU-N].



Immunohistochemistry (IHC) analyzes of Neuromedin-U in paraffin-embedded human skeletal muscle tissue with [AP21204PU-N].