

Product datasheet for **AP21202PU-M**

NXPH1 Rabbit Polyclonal Antibody

Product data:

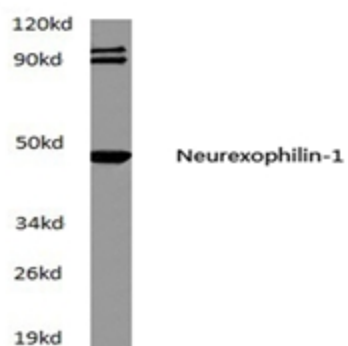
Product Type:	Primary Antibodies
Applications:	IHC, WB
Recommended Dilution:	Western blot: 1/500-1/1000. Immunohistochemistry on Paraffin Sections: 1/50-1/200.
Reactivity:	Human, Mouse, Rat
Host:	Rabbit
Clonality:	Polyclonal
Specificity:	This antibody detects endogenous levels of Neurexophilin-1 protein. (region surrounding asn70)
Formulation:	Phosphate buffered saline (PBS), pH~7.2 State: Aff - Purified State: Liquid purified Ig fraction (> 95% pure by SDS-PAGE). Preservative: 15 mM Sodium Azide
Concentration:	1.0 mg/ml
Purification:	Affinity Chromatography using epitope-specific immunogen.
Conjugation:	Unconjugated
Storage:	Store undiluted at 2-8°C for one month or (in aliquots) at -20°C for longer. Avoid repeated freezing and thawing.
Stability:	Shelf life: One year from despatch.
Predicted Protein Size:	~45 kDa
Gene Name:	neurexophilin 1
Database Link:	Entrez Gene 18231 Mouse Entrez Gene 25501 Rat Entrez Gene 30010 Human P58417
Background:	Neurexophilin-1 (NXPH1) is a secreted protein with a variable N-terminal domain, a highly conserved, N-glycosylated central domain, a short linker region, and a cysteine-rich C-terminal domain. This protein forms a very tight complex with alpha neurexins, a group of proteins that promote adhesion between dendrites and axons.
Synonyms:	NXPH1, NPH1



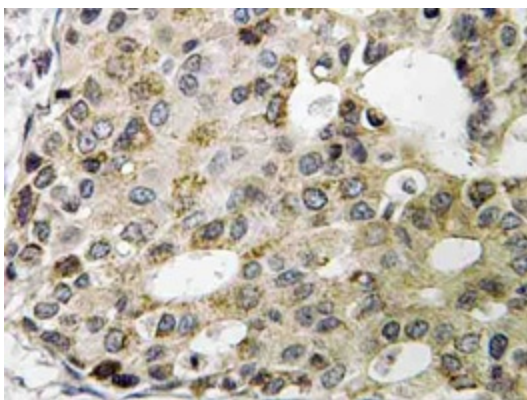
[View online »](#)

Protein Families: Secreted Protein

Product images:



Western blot (WB) analysis of Neurexophilin-1 antibody (Cat.-No.: [AP21202PU-N]) in extracts from A549 cells at 1/500 dilution.



Immunohistochemistry analyzes of Neurexophilin-1 antibody (Cat.-No.: [AP21202PU-N]) in paraffin-embedded human breast carcinoma tissue.